



LIBERTY.

FABRICS

ART COLOURS
FABRICS COLLECTION



ART COLOURS

FABRIC COLLECTION

When Arthur Liberty first opened in 1875, his stock consisted solely of coloured, plain silks from the East. Initially importing soft wools from Kashmir, transparent gauzes and fine light cottons from India, together with plain woven and damask silks from China and Japan. These were available in a huge range of shades and became known as 'Liberty Art Colours'.

In this collection, Liberty heroes a love of colour with a contemporary fabric collection of plains for Interiors. Pairing surprisingly vibrant archive hues with colours inspired by plants, minerals, and birds from around the world. This reimagined Art Colours collection presents a palette of 110 fabrics, from rich plush textures to dry linen mix fabrics – a true celebration of exquisite colour and luxurious texture.

The Art Colours collection comprises of a number of contemporary bases: Duncombe, Cheslyn, Sherborne, Benmore, Heligan, Macdonald, Cotton Velvet, Isola, and Wakehurst. Each base comes in a variety of vibrant hues and archive colours.



DUNCOMBE

A tumbled 100% recycled dual-purpose linen available in eighteen colours. With superior abrasion and beautiful drape - this versatile fabric can be used for upholstery, drapery and accessories.





DUNCOMBE
RED LAC
08382201E



DUNCOMBE
ORPIMENT
08382201G



DUNCOMBE
KELP
08382201H



DUNCOMBE
LICHEN
08382201Y



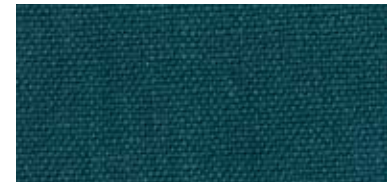
DUNCOMBE
TOURMALINE
08382201I



DUNCOMBE
PURSLANE
08382201J



DUNCOMBE
SCARAB
08382201K



DUNCOMBE
BEETLE
08382201D



DUNCOMBE
SMALT BLUE
08382201P



DESIGN NAME: DUNCOMBE

MARTINDALE: 30,000

FABRIC COMPOSITION: 100% RECYCLED LINEN

Please refer to fabric for true representation of colour

DUNCOMBE
BUNTING
08382201S



DUNCOMBE
GALAH PINK
08382201O



DUNCOMBE
DOWN
08382201X



DUNCOMBE
QUARTZ
08382201T



DUNCOMBE
LAPIS
08382201C



DUNCOMBE
OINTMENT
08382201L



DUNCOMBE
TERN
08382201K



DUNCOMBE
SLOE
08382201V



DUNCOMBE
ROBIN'S EGG
08382201B



DESIGN NAME: DUNCOMBE (CONTINUED)

MARTINDALE: 30,000

FABRIC COMPOSITION: 100% RECYCLED LINEN

Please refer to fabric for true representation of colour



DUNCOMBE
ORPIMENT
08382201G





CHESLYN

A fresh compact recycled cotton available in nine colours. A small percentage of polyester provides excellent structural stability, high performance abrasion, plus protection against wear and tear.





CHESLYN
MALLOW
08312201L



CHESLYN
HONESTY
08312201X



CHESLYN
FLAX
08312201M



CHESLYN
PEWTER
08312201T



CHESLYN
NETTLE
08312201H



CHESLYN
SPINEL
08312201C



CHESLYN
INK
08312201D



CHESLYN
TWILL GREY
08312201Z



CHESLYN
COSMOS
08312201W



DESIGN NAME: CHESLYN

MARTINDALE: 40,000

FABRIC COMPOSITION: 75% RECYCLED COTTON, 25% POLYESTER

Please refer to fabric for true representation of colour



BENMORE

A compact dual-purpose linen-cotton mixed fibre fabric available in fourteen vibrant rich colours. The finishing process provides a subtle brushed effect and softness.





BENMORE
SLIPPER
08322201L



BENMORE
SCARAB
08322201I



BENMORE
RED LAC
08322201E



BENMORE
BLUE JAY
08322201R



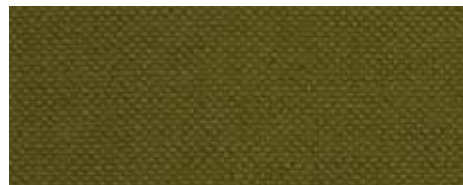
BENMORE
YARROW
08322201G



BENMORE
SMALT BLUE
08322201P



BENMORE
MOSS
08322201H



BENMORE
ARTICHOKE
08322201Y



DESIGN NAME: BENMORE

MARTINDALE: 40,000

FABRIC COMPOSITION: 58% COTTON, 42% LINEN

Please refer to fabric for true representation of colour

BENMORE
HERON
08322201J



BENMORE
LAPIS
08322201C



BENMORE
FLAX FLOWER
08322201S



BENMORE
DOWN
08322201X



BENMORE
TWILL GREY
08322201Z



BENMORE
BUNTING
08322201B



DESIGN NAME: BENMORE (CONTINUED)

MARTINDALE: 40,000

FABRIC COMPOSITION: 58% COTTON, 42% LINEN

Please refer to fabric for true representation of colour



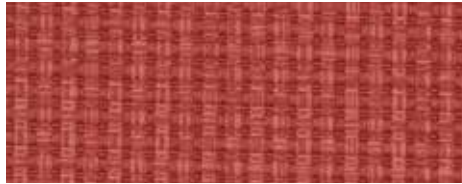
SHERBORNE

A textured heavyweight 100% polyester fabric with superior drape and handle available in eight colours. Suitable for upholstery, drapery and accessories.





SHERBORNE
RED LAC
08332201E



SHERBORNE
LICHEN
08332201H



SHERBORNE
WILLOW
08332201X



SHERBORNE
SCARAB
08332201J



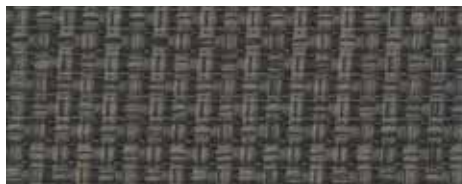
SHERBORNE
FLAX
08332201M



SHERBORNE
FLAX FLOWER
08332201S



SHERBORNE
PEWTER
08332201K



SHERBORNE
INK
08332201D



DESIGN NAME: SHERBORNE

MARTINDALE: 70,000

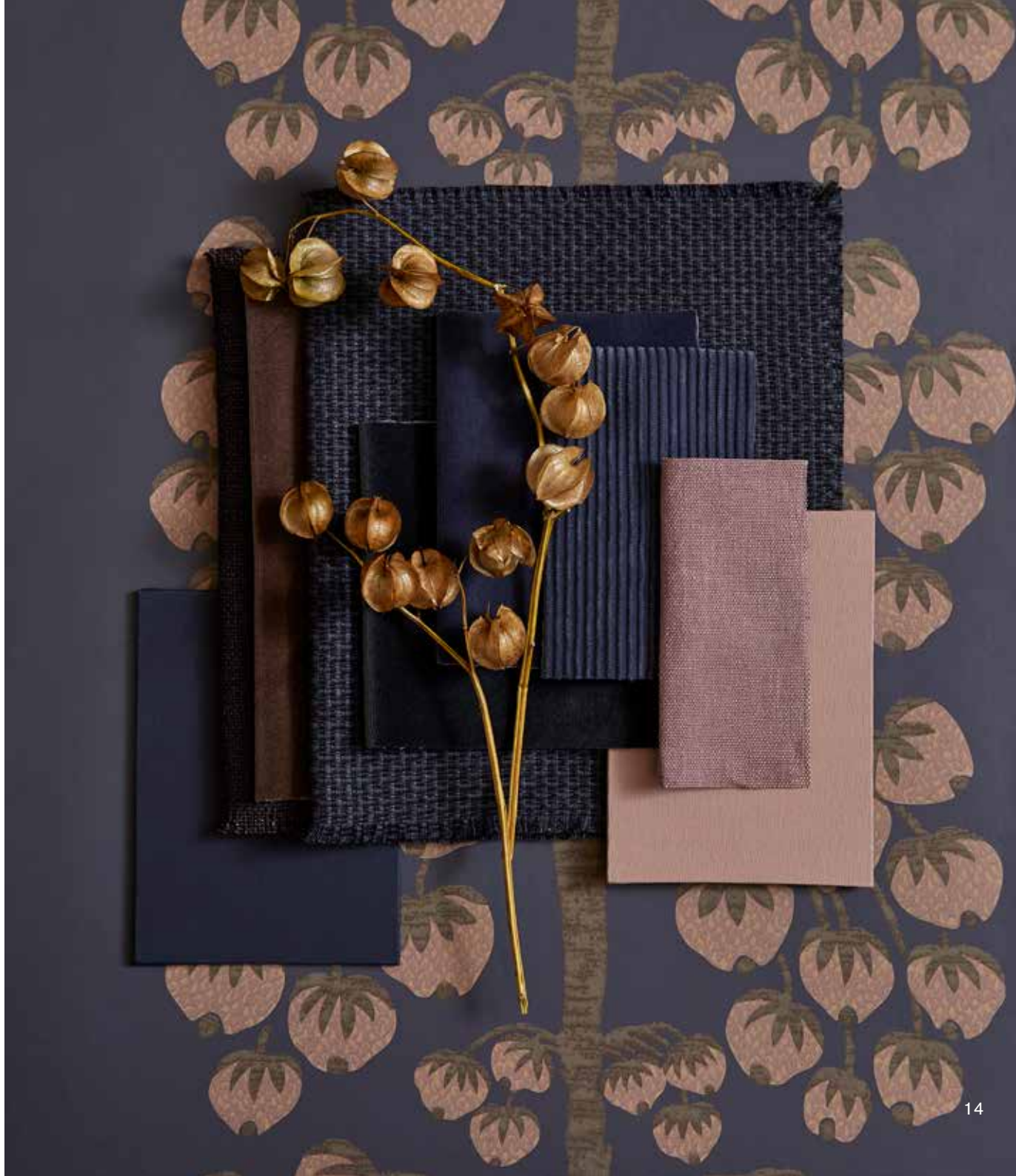
FABRIC COMPOSITION: 100% POLYESTER

Please refer to fabric for true representation of colour



HELIGAN

A heavyweight textured high-performance luxurious linen available in fourteen colours. The finishing process provides a superior hand feel and an elegant drape for curtains. A small percentage of nylon fibre provides excellent structural stability and high-performance abrasion for upholstery.





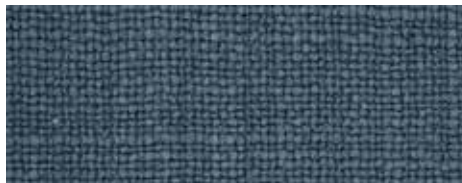
HELIGAN
HONESTY
08362201M



HELIGAN
TERN
08362201K



HELIGAN
FLAX FLOWER
08362201S



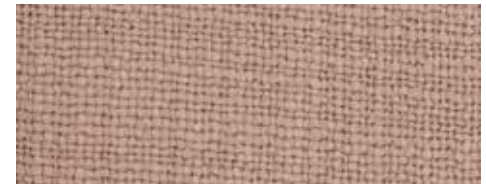
HELIGAN
RED LAC
08362201E



HELIGAN
MOSS
08362201H



HELIGAN
SLIPPER
08362201L



HELIGAN
Twill GREY
08362201T



HELIGAN
COSMOS
08362201W



DESIGN NAME: HELIGAN

MARTINDALE: 80,000

FABRIC COMPOSITION: 90% LINEN, 10% POLYAMIDE

Please refer to fabric for true representation of colour



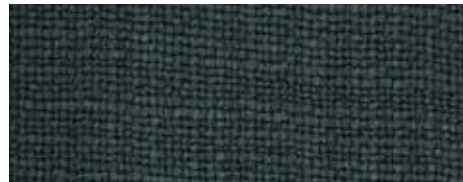
HELIGAN
SALVIA
08362201F



HELIGAN
BRINJAL
08362201O



HELIGAN
BLUE JAY
08362201R



HELIGAN
NETTLE
08362201I



HELIGAN
SCARAB
08362201J



HELIGAN
INK
08362201D



DESIGN NAME: HELIGAN (CONTINUED)

MARTINDALE: 80,000

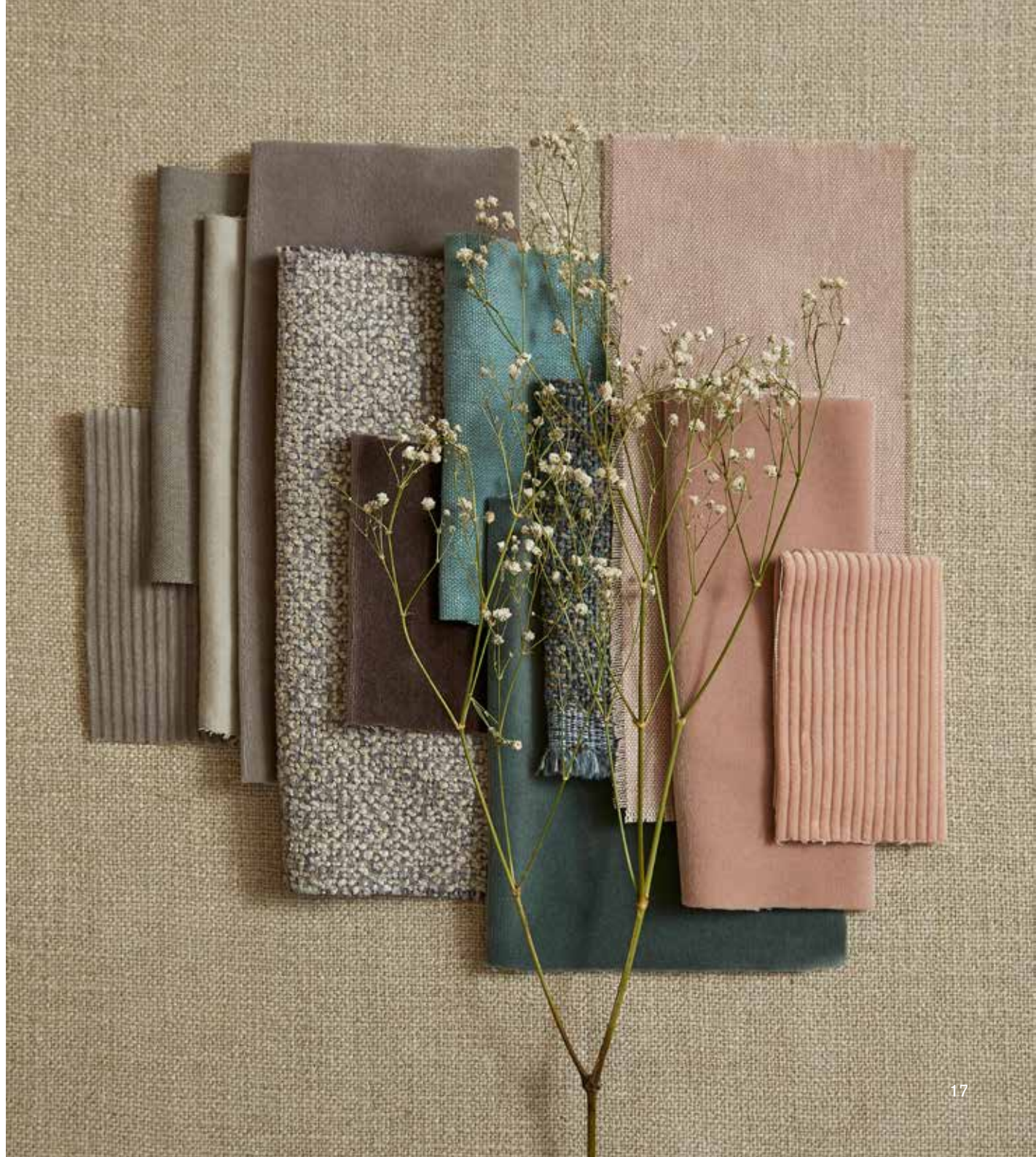
FABRIC COMPOSITION: 90% LINEN, 10% POLYAMIDE

Please refer to fabric for true representation of colour



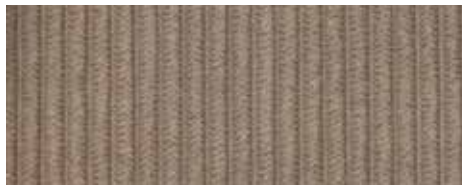
ISOLA

A dual-purpose recycled corduroy in eight colours. Plush in feel and rich in colour. A beautiful upholstery fabric and with elegant drape, also perfect for heavier curtains where blackout or draft excluding qualities may be required.





ISOLA
FLAX
08382201M



ISOLA
FLAX FLOWER
08382201C



ISOLA
MALLOW
08382201L



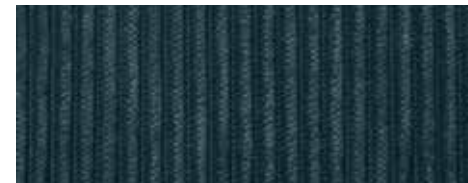
ISOLA
FERN
08382201H



ISOLA
RED LAC
08382201E



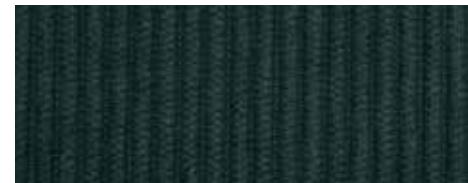
ISOLA
BEETLE
08382201J



ISOLA
INK
08382201D



ISOLA
ACACIA
08382201I

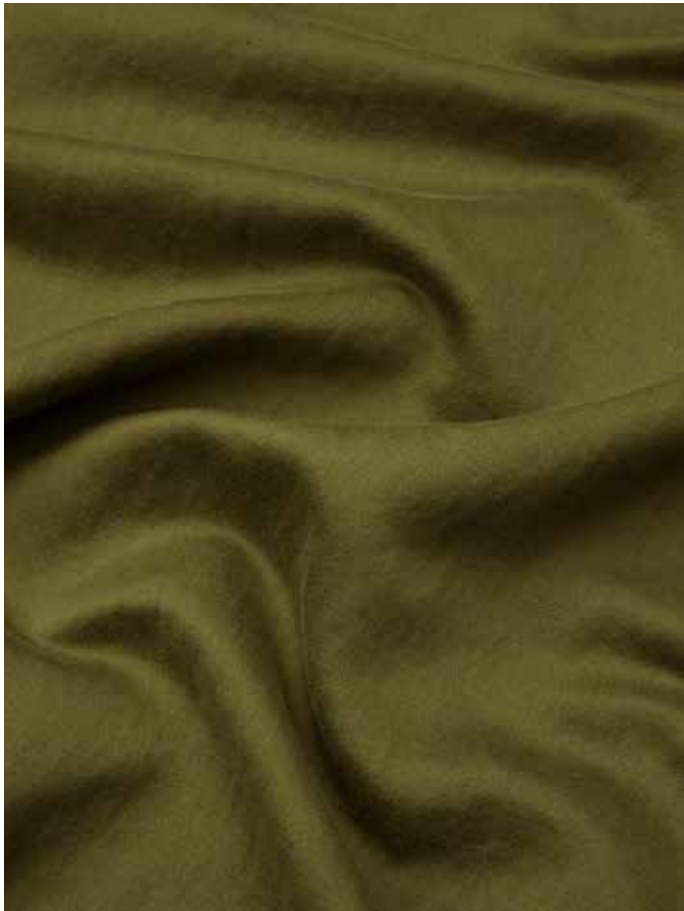


DESIGN NAME: ISOLA

MARTINDALE: 50,000

FABRIC COMPOSITION: 100% POLYESTER PET RECYCLED

Please refer to fabric for true representation of colour



WAKEHURST

A beautiful dual-purpose cotton-linen sateen with exceptional drape and soft sheen, available in eleven colours. The tight weave enables absolute richness and lustre of colour in eleven shades. A versatile option for windows where linings may not be needed.





WAKEHURST
ORPIMENT
08402201G



WAKEHURST
KELP
08402201H



WAKEHURST
PEWTER
08402201N



WAKEHURST
LACQUER
08402201E



WAKEHURST
SLIPPER
08402201L



WAKEHURST
HERON
08402201J



WAKEHURST
INK
08402201D



WAKEHURST
HONESTY
08402201M



WAKEHURST
WILLOW
08402201W



WAKEHURST
PEWTER BLUE
08402201Z



WAKEHURST
TERN
08402201K



DESIGN NAME: WAKEHURST

MARTINDALE: 40,000

FABRIC COMPOSITION: 57% COTTON, 43% LINEN

Please refer to fabric for true representation of colour



WAKEHURST
ORPIMENT
08402201G





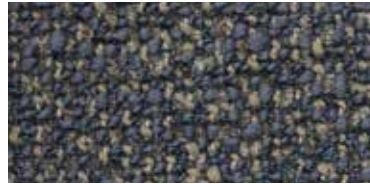
MACDONALD

A beautiful plush yarn-dyed bi-coloured bouclé with depth of colour and texture. Available in nine colours, this fabric combines superior abrasion with a luxurious look and feel for contemporary upholstery.

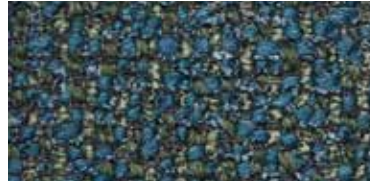




MACDONALD
PERIWINKLE
08422201S



MACDONALD
SCARAB
08422201J



MACDONALD
KELP
08422201H



MACDONALD
AMARANTH
08422201Q



MACDONALD
BLUE JAY
08422201R



MACDONALD
FENNEL
08422201G



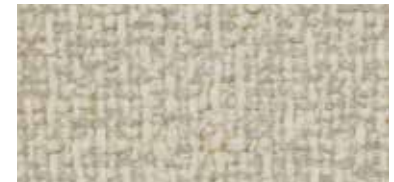
MACDONALD
FLAX
08422201M



MACDONALD
GROSGRAIN
08422201K



MACDONALD
COSMOS
08422201W



DESIGN NAME: MACDONALD

MARTINDALE: 70,000

FABRIC COMPOSITION: 41% POLYESTER, 28% POLYCOTTON, 19% WOOL, 12% COTTON

Please refer to fabric for true representation of colour



COTTON VELVET

A high-percentage cotton velvet containing a small amount of polyester fibre for structural stability and exceptional abrasion rating. Available in nineteen shades, it is a perfect base for rich saturated tones and bright colours.

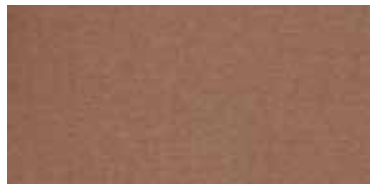




COTTON VELVET
LACQUER
06591101V



COTTON VELVET
OINTMENT
06591101L



COTTON VELVET
GROSGRAIN
06591101K



COTTON VELVET
BRINJAL
06591101Q



COTTON VELVET
FLAX FLOWER
06591101S



COTTON VELVET
MOSS
06591101H



COTTON VELVET
CURLW
06591101N



COTTON VELVET
FLAX
06591101M



COTTON VELVET
QUARTZ
06591101Z



COTTON VELVET
INK
06591101P



COTTON VELVET
YARROW
06591101A



COTTON VELVET
AMARANTH
06591101O



DESIGN NAME: COTTON VELVET

MARTINDALE: 40,000

FABRIC COMPOSITION: 88% COTTON, 12% POLYESTER

Please refer to fabric for true representation of colour



COTTON VELVET
AGAVE
06591101R



COTTON VELVET
JADEITE
06591101E



COTTON VELVET
FERN
06591101Y



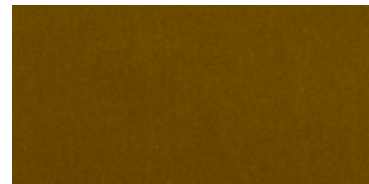
COTTON VELVET
SLIPPER
06591101D



COTTON VELVET
SALVIA
06591101F



COTTON VELVET
FENNEL
06591101B



COTTON VELVET
SCARAB
06591101G



DESIGN NAME: COTTON VELVET (CONTINUED)

MARTINDALE: 40,000

FABRIC COMPOSITION: 88% COTTON, 12% POLYESTER

Please refer to fabric for true representation of colour



COTTON VELVET
MOSS
06591101H





PAGE 6

WALLPAPER

Cypress Voyage in Fennel,
Botanical Atlas collection
- Liberty Fabrics

PAINT

Farrow & Ball

DAYBED

8 Holland Street.

MATTRESS

Honesty

CUSHIONS

All from

Art Colours collection

- Liberty Fabrics:

(L TO R Front)

Duncombe in Orpiment

Duncombe in Kelp

Sherborne in Flax

(L TO R Rear)

Duncombe in Orpiment

Duncombe in Kelp

Benmore in Yarrow

PAGE 21

WALLPAPER

Magical Plants in Jade,
Botanical Atlas collection
- Liberty Fabrics

PAINT

Paint & Paper Library

SOFA

George Smith, upholstered
with Cotton Velvet in Moss,
Art Colours collection
- Liberty Fabrics

RUG

Emily's House

VASE

Astier De Villatte at Liberty

PAGE 27

WALLPAPER

Floating Palace in Twill Grey,
Botanical Atlas collection
- Liberty Fabrics

PAINT

Paint & Paper Library

CHAIR

Bonacina upholstered
with Heligan in Slipper,
Art Colours collection
- Liberty Fabrics

SIDE TABLE

Moschino

VASE

Flow gallery

PHOTOGRAPHER

Polly Wreford

STYLIST

Claudia Bryant

**Please Note:**

Please note our fabrics are made from high quality materials. The natural qualities of linen mean that there may be slubs and slight variations in weave. These slight variations may affect the penetration of dye in some places. This is not a defect of the fabric – rather it shows quality and integrity of the natural yarn and printing process. This can be seen on larger pieces and on showroom drapes. Please ask for assistance if you require clarification prior to purchase. In addition, there may be some shade variation from batch to batch. Please order a current stock cutting if you require an exact colour match. Technical specifications are shown on the reverse of each sample.

Copyright:

The copyright and any other intellectual property rights in the designs on this fabric belong to Liberty Fabric Ltd. The designs may not be copied, adapted or translated into any other media without the prior written permission of Liberty. Liberty takes the protection of its intellectual property very seriously and will take immediate legal steps to defend its rights in the event of any unauthorised use of its designs.

Testing:

In order to comply with various international and national upholstery flame retardant standards, these high-quality upholstery fabrics may require additional FR treatments. Please refer to information found on sample labels and contact Liberty Fabrics for further information. All fabrics have been tested in accordance with the standards shown on the reverse of each fabric. Technical data sheets and sight of testing certificates can be supplied upon request. Where FR treatment is indicated an additional cost may apply.

Care and Cleaning:

We recommend that all velvets and upholstery fabrics are regularly brushed or vacuumed with an upholstery fitting, both to prolong the life of the fabric and to maintain its appearance. Light spot cleaning can be carefully carried out, but we recommend spot testing in a less visible area. Professional drycleaning as necessary.



Flammability:

UK Upholstery:

Unless indicated you will need to use an interliner or apply an additional FR treatment to comply with UK upholstery FR regulations. Please refer to the individual fabric technical sheets. Information is available from Liberty regarding FR treatments for Cigarette, Match and Crib 5 Standards. Test Certificates are available on request.

Liberty have tested all our fabrics in accordance with UK flammability codes.

EU Upholstery:

Unless indicated additional FR treatment may be required to comply with European Standards of EN 1021.1 and EN 1021.2. Please note passes are achieved when used in conjunction with EU regulation flame retardant foam. Please refer to the technical sheet for each individual fabric. Liberty have tested all our fabrics in accordance with EU flammability codes.

USA Upholstery:

Unless indicated additional FR treatment may be required to comply with US Standards of TB 117 and NFPA 260. Please refer to the technical sheet for each individual fabric. Liberty have tested all our fabrics in accordance with USA flammability codes.

Please Note:

In order to comply with various international and national upholstery flame retardant standards, these high quality upholstery fabrics may require additional FR treatments. Please refer to information found on sample labels and contact Liberty Fabrics for further information. All fabrics have been tested in accordance with the standards shown on the reverse of each fabric. Technical data sheets and sight of testing certificates can be supplied upon request. Where FR treatment is indicated an additional cost may apply.