



LIBERTY.

FABRICS

THE MODERN COLLECTOR
WALLPAPER and INTERIORS FABRIC



LIBERTY

WALLPAPER and INTERIORS FABRIC

THE MODERN COLLECTOR

2021 sees the launch of 'The Modern Collector' Fabric and wallpaper Collection, celebrating Liberty's historic love of craftsmanship and design. Archival Liberty prints have been reinterpreted and reworked, appearing alongside contemporary new artworks created in our London design studio – for the next generation of iconic Liberty interiors.

The Modern Collector sees a special focus on surface: lustre and matte effects are carefully balanced with line and tone, bold colour and hue, and beautiful, unexpected texture. The collection features manufacturing processes which have been carefully selected to bring out the character of each design. Mixing skilful design with artisanal printing and weaving techniques, the process informs the designs, and vice versa, in a perfect harmony of art and craft. The result is a collection that combines expert craftsmanship with a powerful depth of storytelling, reflecting the beauty and quality of heritage fabrics with a fresh and contemporary appeal. With his passion for exquisite textiles and objets d'art acquired on travels around the globe, our founder Arthur Lasenby Liberty was the original collector. He imagined the Liberty store as a great ship, filled with treasures and docked in the streets of London. Inspired by Arthur, the spirit of the collector lives on. The Modern Collector range is the next chapter of our story, bringing the vibrancy of the Liberty aesthetic indoors with three design heritage pillars as inspiration: Floribunda, Art Nouveau and The Tree of Life.

Liberty has always appealed to the heart and spirit of the collector – those with a passion for heirloom pieces which transcend the generations. The Modern Collector is dedicated to those enthusiasts, both past and present.



THE MODERN COLLECTOR: FLORIBUNDA

The Floribunda story offers a celebration of English flowers and gardens – from the grounds of great houses like Charleston and Great Dixter, to the humble wild plants found across the British countryside. Our designers drew from Victorian flower-pressing and botanical illustrations, inspired by blueprint cyanotypes pioneered by Anna Atkins in the 1800s. New Floribunda

heroes are balanced with iconic Liberty small-scale florals such as Poppy Meadowfield and Wiltshire Blossom – initially developed for scarf designs, these perennials have been reworked into new layouts and forms for contemporary fabrics and wallpaper. Soft colour and lustrous surface print effects lend a rich, modern appeal.

INTERIORS@LIBERTYLONDON.COM



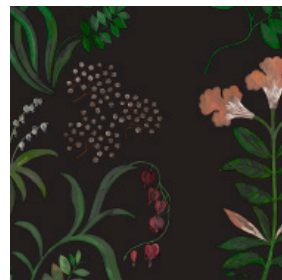


JADE

THE MODERN COLLECTOR
INTERIORS@LIBERTYLONDON.COM

WALLPAPER: Floribunda, Jade

REFERENCE: 07211001I



BOTANICAL STRIPE
Jade

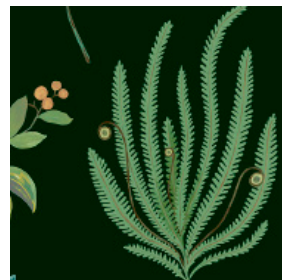
REFERENCE: 07231001H



WILTSHIRE BLOSSOM
Lichen

FABRIC: Floribunda, Jade

REFERENCE: 07342103I



BOTANICAL FLORA
Jade
Wellington Velvet

REFERENCE: 07352101I



POPPY MEADOWFIELD
Jade
Becless Cotton

REFERENCE: 07992101L



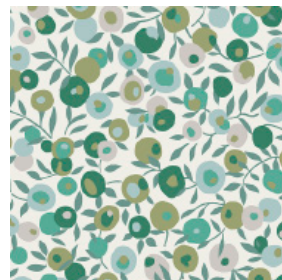
LUSTRE LINEN
Ointment

REFERENCE: 07992101H



LUSTRE LINEN
Lichen

REFERENCE: 07342102I



WILTSHIRE BLOSSOM
Jade
Wellington Velvet

REFERENCE: 06631101H



EMBERTON LINEN
Acacia

REFERENCE: 07992101I



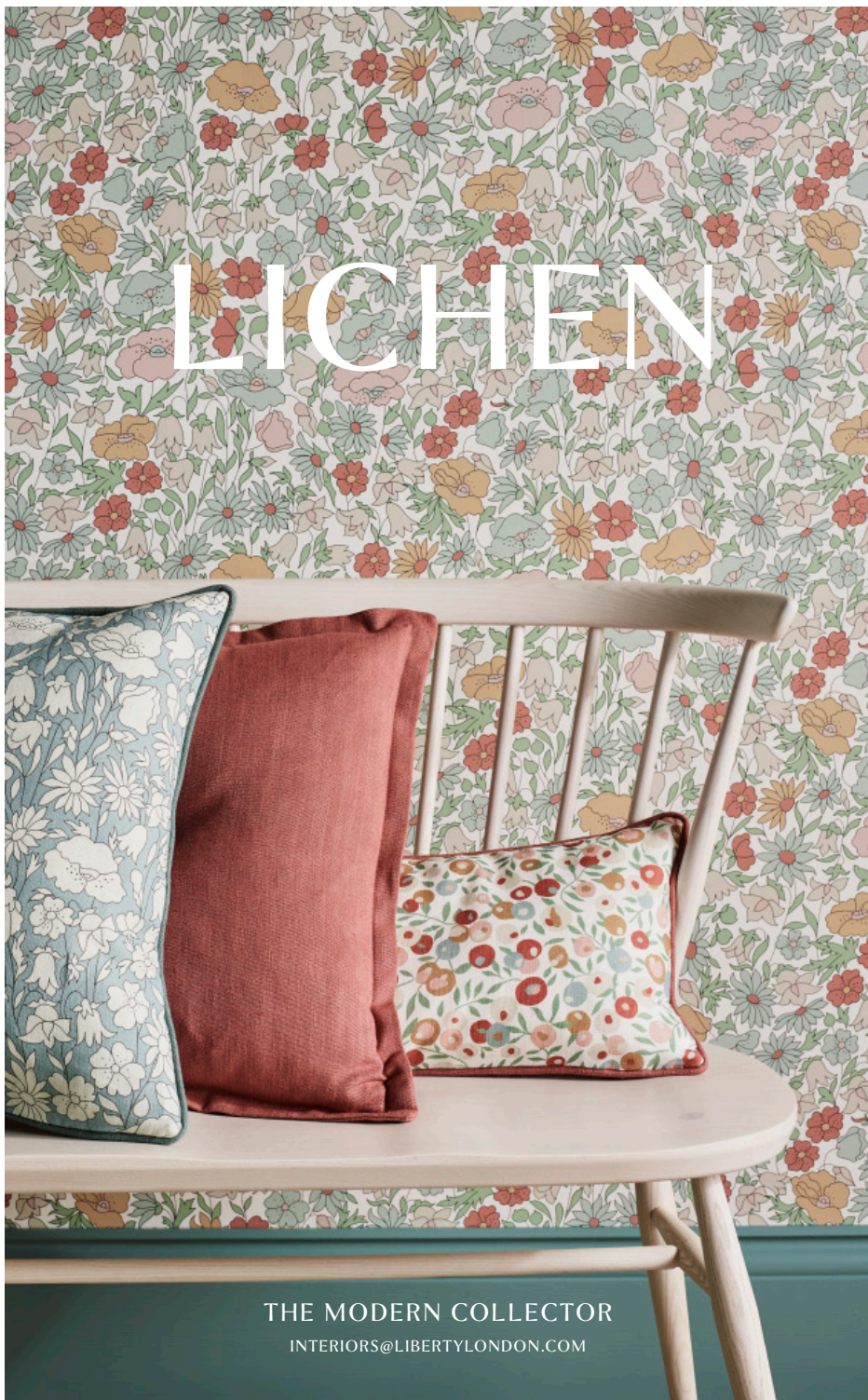
LUSTRE LINEN
Jade



INTERIORS@LIBERTYLONDON.COM







WALLPAPER: Floribunda, Lichen

REFERENCE: 07211001K



BOTANICAL STRIPE
Pewter

REFERENCE: 07231001F



WILTSHIRE BLOSSOM
Fennel

REFERENCE: 07221001F



POPPY MEADOWFIELD
Lichen

REFERENCE: 07221002F



POPPY MEADOW
Salvia

FABRIC: Floribunda, Lichen

REFERENCE: 06532107F



WILTSHIRE BLOSSOM
Lichen
Landsdowne Linen

REFERENCE: 07992101O



LUSTRE LINEN
Lacquer

REFERENCE: 07992101F



LUSTRE LINEN
Salvia

REFERENCE: 06532102F



POPPY MEADOW
Lichen
Landsdowne Linen

REFERENCE: 06532103F



POPPY MEADOWFIELD
Lichen
Landsdowne Linen



LAPIS

THE MODERN COLLECTOR
INTERIORS@LIBERTYLONDON.COM

WALLPAPER: Floribunda, Lapis

REFERENCE: 07221002G



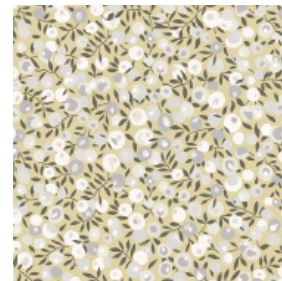
POPPY MEADOW
Fennel

REFERENCE: 07211001G



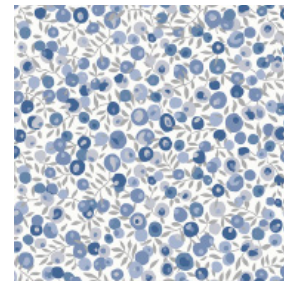
BOTANICAL STRIPE
Fennel

REFERENCE: 07231001G



WILTSHIRE BLOSSOM
Soft Fennel

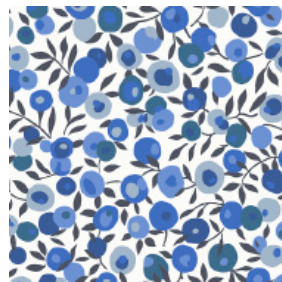
REFERENCE: 07231001C



WILTSHIRE BLOSSOM
Lapis

FABRIC: Floribunda, Lapis

REFERENCE: 06532107C



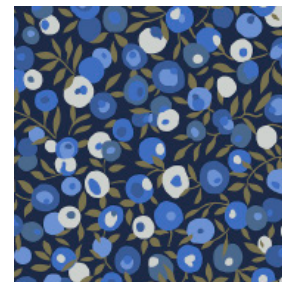
WILTSHIRE BLOSSOM
Lapis
Landsdowne Linen

REFERENCE: 07992101M



LUSTRE LINEN
Tobacco

REFERENCE: 07342102C



WILTSHIRE BLOSSOM
Lapis Dark
Wellington Velvet

REFERENCE: 07992101D



LUSTRE LINEN
Ink

REFERENCE: 06532103C



POPPY MEADOWFIELD
Lapis
Landsdowne Linen

REFERENCE: 07992101G



LUSTRE LINEN
Fennel

REFERENCE: 06631101J



EMBERTON LINEN
Lapis

REFERENCE: 06532102G



POPPY MEADOW
Fennel
Landsdowne Linen



PEWTER

THE MODERN COLLECTOR
INTERIORS@LIBERTYLONDON.COM

WALLPAPER: Floribunda, Pewter

REFERENCE: 07231001K



WILTSHIRE BLOSSOM
Pewter Gold

REFERENCE: 07211001M



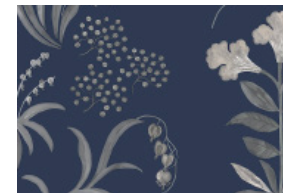
BOTANICAL STRIPE
Pewter White

REFERENCE: 07221002M



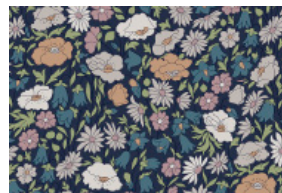
POPPY MEADOW
Pewter Gold

REFERENCE: 07211001N



BOTANICAL STRIPE
Pewter Blue

REFERENCE: 07221001N



POPPY MEADOWFIELD
Pewter Blue

REFERENCE: 07221001K



POPPY MEADOWFIELD
Pewter

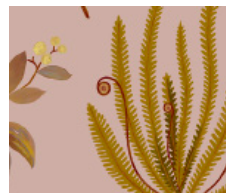
REFERENCE: 07221002L



POPPY MEADOW
Ointment

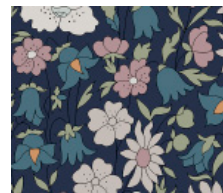
FABRIC: Floribunda, Pewter

REFERENCE: 07342103E



BOTANICAL FLORA
Lacquer
Wellington Velvet

REFERENCE: 06532103N



POPPY MEADOWFIELD
Pewter Blue
Landsdowne Linen

REFERENCE: 07352101K



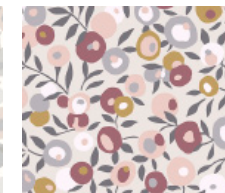
POPPY MEADOWFIELD
Pewter
Becless Cotton

REFERENCE: 06532107K



WILTSHIRE BLOSSOM
Pewter
Landsdowne Linen

REFERENCE: 07342102L



WILTSHIRE BLOSSOM
Sloe
Wellington Velvet

REFERENCE: 07992101E



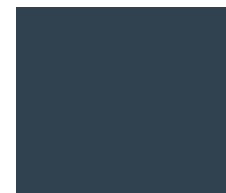
LUSTRE LINEN
Slipper

REFERENCE: 06591101D



COTTON VELVET
Slipper

REFERENCE: 07992101N



LUSTRE LINEN
Pewter Blue

REFERENCE: 06631101B



EMBERTON LINEN
Down

REFERENCE: 06631101A



EMBERTON LINEN
Grosgrain



THE MODERN COLLECTOR: ART NOUVEAU

The Art Nouveau story offers a continuation of our designers' journey through collections of fantastic plants. Botanicals have always been an essential element of Nouveau design, appearing in highly stylised and sinuously exaggerated forms. The celebration of single motifs of flower and feather hearken back to the themes of medieval art,

with particular favourite Nouveau icons including tulips, poppies, thistles, roses and peacock feathers. These enduring motifs are given a fresh perspective through the use of bold scale, contemporary colour and careful selection of fabric and wallpaper bases – heirloom designs, reimagined for modern interiors.





LAPIS

THE MODERN COLLECTOR
INTERIORS@LIBERTYLONDON.COM

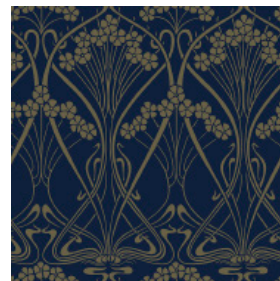
WALLPAPER: Art Nouveau, Lapis

REFERENCE: 07241001C



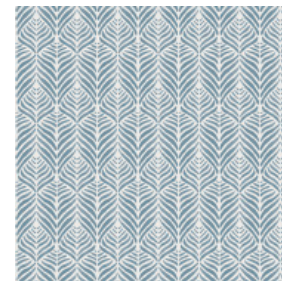
Deco Scallop
Lapis

REFERENCE: 07241002C



Ianthe Mono
Lapis

REFERENCE: 07251002C



Quill
Lapis

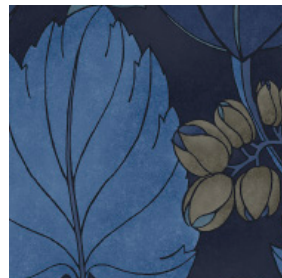
REFERENCE: 07241002G



Ianthe Mono
Fennel

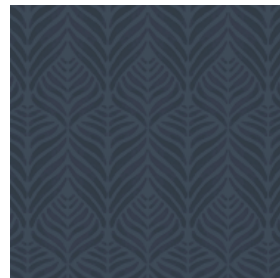
FABRIC: Art Nouveau, Lapis

REFERENCE: 07342101C



REGENCY TULIP
Lapis
Wellington Velvet

REFERENCE: 06532101D



QUILL
Lapis
Landsdowne Linen

REFERENCE: 07932101H



QUILL WEAVE
Lichen

REFERENCE: 07952101H



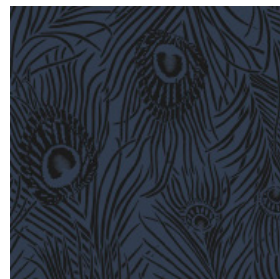
DECO SCALLOP
Lichen

REFERENCE: 07932101C



QUILL WEAVE
Lapis

REFERENCE: 07922101D



HERA PLUME
Ink

lichen

WALLPAPER: Art Nouveau, Lichen

REFERENCE: 07251002F



QUILL
Lichen

REFERENCE: 07251001F



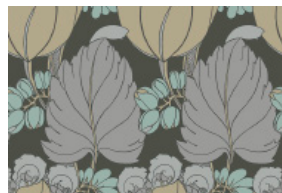
HERA PLUME
Lichen

REFERENCE: 07231002F



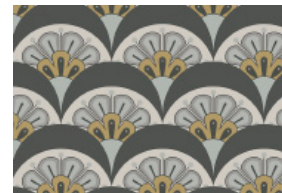
REGENCY TULIP
Lichen

REFERENCE: 07231002N



REGENCY TULIP
Pewter

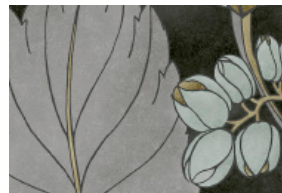
REFERENCE: 07241001N



DECO SCALLOP
Pewter

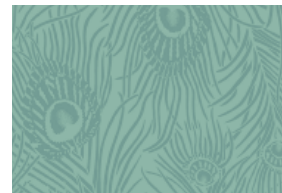
FABRIC: Art Nouveau, Lichen

REFERENCE: 07342101N



REGENCY TULIP
Pewter Dark

REFERENCE: 07922101F



HERA PLUME
Salvia

REFERENCE: 07922101N



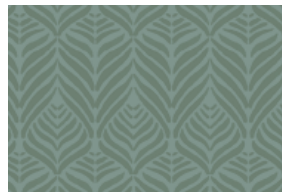
HERA PLUME
Pewter Blue

REFERENCE: 06591101F



COTTON VELVET
Salvia

REFERENCE: 07932101F



QUILL WEAVE
Salvia

REFERENCE: 07922101G



HERA PLUME
Fennel

REFERENCE: 07952101N



DECO SCALLOP
Pewter Dark

THE MODERN COLLECTOR
INTERIORS@LIBERTYLONDON.COM



LACQUER

WALLPAPER: Art Nouveau, Lacquer

REFERENCE: 07251001L



HERA PLUME
Ointment

REFERENCE: 07251002L



QUILL
Ointment

REFERENCE: 07241002L



IANTHE MONO
Ointment

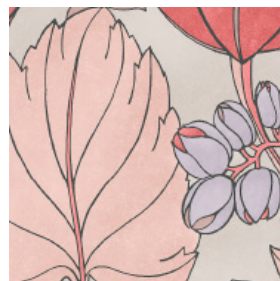
REFERENCE: 07231002E



REGENCY TULIP
Lacquer

FABRIC: Art Nouveau, Lacquer

REFERENCE: 07342101E



REGENCY TULIP
Lacquer
Wellington Velvet

REFERENCE: 07922101E



HERA PLUME
Slipper

REFERENCE: 07952101E



DECO SCALLOP
Lacquer

REFERENCE: 06631101D



EMBERTON LINEN
Sloe



JADE

THE MODERN COLLECTOR
INTERIORS@LIBERTYLONDON.COM

WALLPAPER: Art Nouveau, Jade

REFERENCE: 07251002I



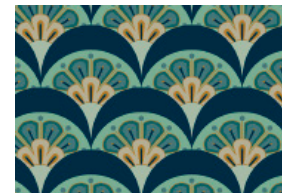
QUILL
Jade

REFERENCE: 07251001M



HERA PLUME
Pewter Gold

REFERENCE: 07241001I



DECO SCALLOP
Jade

REFERENCE: 07231002I



REGENCY TULIP
Jade

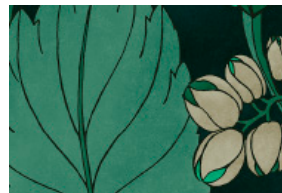
REFERENCE: 07251001I



HERA PLUME
Jade

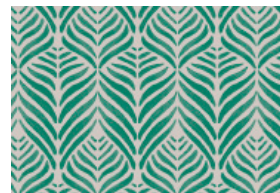
FABRIC: Art Nouveau, Jade

REFERENCE: 07342101I



REGENCY TULIP
Jade
Wellington Velvet

REFERENCE: 06532101I



QUILL
Jade
Landsdowne Linen

REFERENCE: 07932101I



QUILL WEAVE
Jade

REFERENCE: 07922101J



HERA PLUME
Scarab

REFERENCE: 06591101G



COTTON VELVET
Scarab

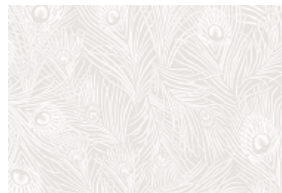


PEWTER

THE MODERN COLLECTOR
INTERIORS@LIBERTYLONDON.COM

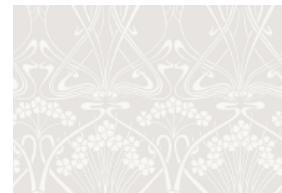
WALLPAPER: Art Nouveau, Pewter

REFERENCE: 07251001K



HERA PLUME
Pewter White

REFERENCE: 07241002K



IANTHE MONO
Pewter White

REFERENCE: 07251002K



QUILL
Pewter

REFERENCE: 07241001K



DECO SCALLOP
Pewter White

REFERENCE: 07231002L



REGENCY TULIP
Ointment

FABRIC: Art Nouveau, Pewter

REFERENCE: 06532106K



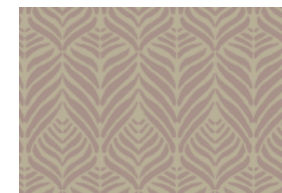
REGENCY TULIP
Pewter
Landsdowne Linen

REFERENCE: 06631101F



EMBERTON LINEN
Ointment

REFERENCE: 07932101L



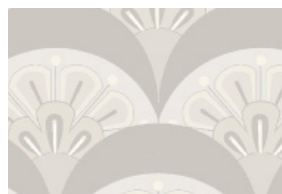
QUILL WEAVE
Ointment

REFERENCE: 06532101K



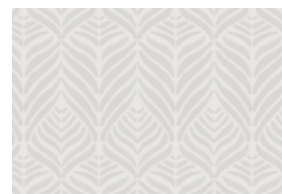
QUILL
Pewter
Landsdowne Linen

REFERENCE: 07952101K



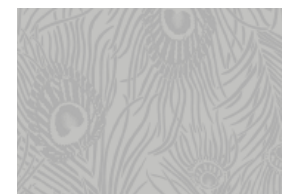
DECO SCALLOP
Pewter

REFERENCE: 07932101K



QUILL WEAVE
Pewter

REFERENCE: 07922101K



HERA PLUME
Pewter



THE MODERN COLLECTOR: TREE OF LIFE

The Tree of Life story is inspired by hand painted Indian Palampore textiles of the eighteenth and early nineteenth centuries. Tree of Life textiles symbolise the personal journey through nature's life cycle, with versions of this ancient motif found all around the world. Our designers reworked ornate archive artworks into simplified layouts to enhance the striking floral motifs and

patternation, complemented by new contemporary coordinate designs. The team took inspiration from the bold colouration of mordant dyes and natural pigments – printed on an iridescent non-woven ground for wallpaper and on linen in flat colour for fabrics, Palampore Trail shines with rich shades reminiscent of these exquisite plant and insect dyes.

INTERIORS@LIBERTYLONDON.COM



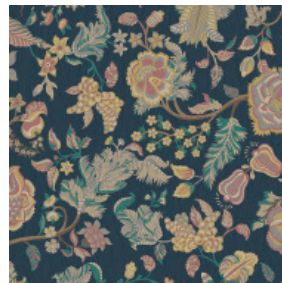
PEWTER BLUE



THE MODERN COLLECTOR
INTERIORS@LIBERTYLONDON.COM

WALLPAPER: Tree Of Life, Pewter Blue

REFERENCE: 07261001N



PALAMPORE TRAIL
Pewter Blue

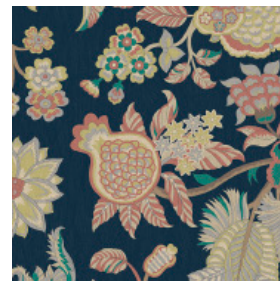
FABRIC: Tree Of Life, Pewter Blue

REFERENCE: 06542101H



PERSIAN VOYAGE
Lichen
Amersham

REFERENCE: 06532105N



PALAMPORE TRAIL
Pewter Blue
Landsdowne Linen



lichen

WALLPAPER: Tree Of Life, Lichen

REFERENCE: 07231004M



PAISLEY FERN
Fennel

REFERENCE: 07231004I



PAISLEY FERN
Salvia

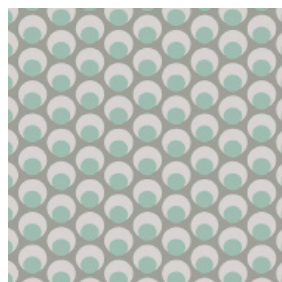
REFERENCE: 07261001F



PALAMPORE TRAIL
Lichen

FABRIC: Tree Of Life, Lichen

REFERENCE: 07902101F



OTTOMAN SPOT
Lichen

REFERENCE: 06532105F



PALAMPORE TRAIL
Lichen
Landsdowne Linen

REFERENCE: 06631101K



EMBERTON LINEN
Robin's Egg

REFERENCE: 06532105M



PALAMPORE TRAIL
Pewter
Landsdowne Linen



INTERIORS@LIBERTYLONDON.COM



LAPIS

WALLPAPER: Tree Of Life, Lapis

REFERENCE: 07231004K



PAISLEY FERN
Pewter White

REFERENCE: 07231003K



PATRICIA
Pewter

REFERENCE: 07231004N



PAISLEY FERN
Pewter

REFERENCE: 07231003E



PATRICIA
Lacquer

REFERENCE: 07261001C



PALAMPORE TRAIL
Lapis

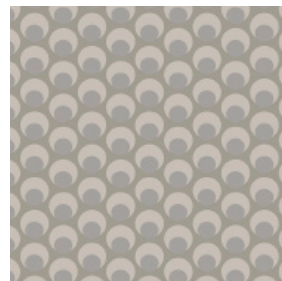
REFERENCE: 07231003C



PATRICIA
Lapis

FABRIC: Tree Of Life, Lapis

REFERENCE: 07902101K



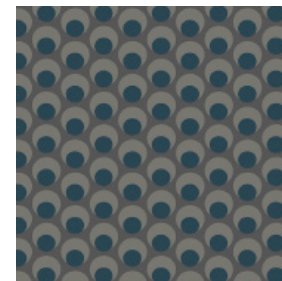
OTTOMAN SPOT
Pewter

REFERENCE: 06532104K



PERSIAN VOYAGE
Pewter
Landsdowne Linen

REFERENCE: 07902101C



OTTOMAN SPOT
Lapis

REFERENCE: 06542101C



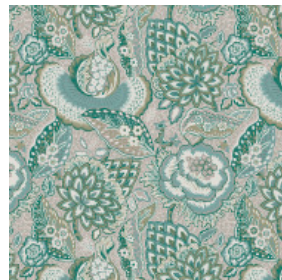
PERSIAN VOYAGE
Lapis
Amersham



JADE

WALLPAPER: Tree Of Life, Jade

REFERENCE: 07231003I



PATRICIA
Jade

REFERENCE: 07231004L



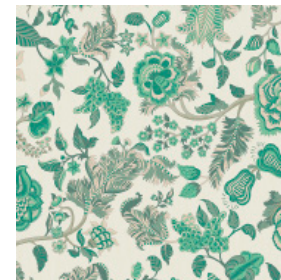
PAISLEY FERN
Ointment

REFERENCE: 07261001L



PALAMPORE TRAIL
Ointment

REFERENCE: 07261001I



PALAMPORE TRAIL
Jade

FABRIC: Tree Of Life, Jade

REFERENCE: 07902101M



OTTOMAN SPOT
Ointment

REFERENCE: 06532105I



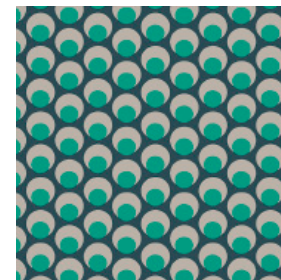
PALAMPORE TRAIL
Jade Ointment
Landsdowne Linen

REFERENCE: 06532104J



PERSIAN VOYAGE
Jade Stone
Landsdowne Linen

REFERENCE: 07902101J



OTTOMAN SPOT
Jade

REFERENCE: 06542101I



Persian Voyage
Jade
Amersham

REFERENCE: 06532105E



Palampore Trail
Lacquer
Landsdowne Linen

THE MODERN COLLECTOR
INTERIORS@LIBERTYLONDON.COM

Fabric: Pattern Library

Botanical Flora: Hand-painted in the Liberty design studio, Botanical Flora is a signature artwork of the Floribunda collection, celebrating the historic tradition of botanical illustration in Britain. Botanical Flora is printed on cotton velvet, bringing to life the soft painterly nature of the motifs.

Wiltshire Blossom: The iconic 1930s leaf-and-berry Liberty print is repainted and re-engineered into a contemporary furnishing design. It is printed on both 100% linen and cotton velvet, providing a beautiful tactility and clarity of print mark for highly versatile contemporary fabrics.

Poppy Meadowfield: A reworking of a much-loved archival print from 1910. Redrawn and rebalanced as a contemporary fabric design, the fine outlines and plains of solid colour mark this as an instantly-recognisable Liberty floral.

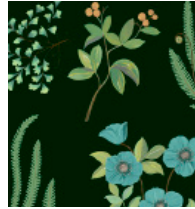
Poppy Meadow: A one colour version of the above, Poppy Meadow was developed as a contemporary all-over floral fabric design using soft contemporary coloured grounds.

Lustre Linen: Our new luxurious plain fabric richly coloured in 10 bespoke dyed colours. The surface is gently calendared to produce a soft lustrous finish – reminiscent of the lustre-ware that would have originally been seen in the store.

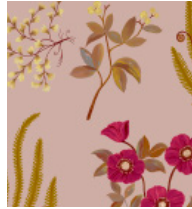
Regency Tulip: Reminiscent of the Gentleman's Clubs of the Regency period, Regency Tulip is reimagined through bold tonal colour combinations into a striking, sartorial design. Richly coloured grounds form the background for the boldly coloured tulip motifs, printed on beautiful cotton velvet.

Deco Scallop: Deco Scallop is inspired by Liberty's archive catalogues of the late 1890s to 1910s – where beautiful Japanese Art Deco fans and wallpapers were imported alongside fabrics, jewellery, porcelain, screens, and rugs from the Far East. The motif was developed by the Liberty design studio as a simple contemporary woven jacquard design – a modern take on the Liberty peacock feather and Art Deco fan.

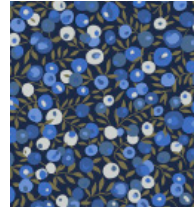
BOTANICAL FLORA
Jade



BOTANICAL FLORA
Lacquer



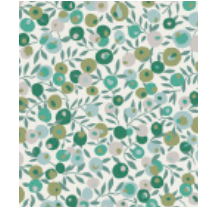
WILTSHIRE BLOSSOM
Lapis Dark



WILTSHIRE BLOSSOM
Sloe



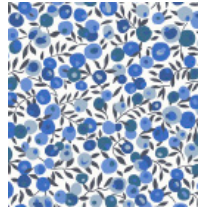
WILTSHIRE BLOSSOM
Jade



WILTSHIRE BLOSSOM
Lichen



WILTSHIRE BLOSSOM
Lapis



WILTSHIRE BLOSSOM
Pewter



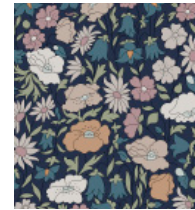
POPPY MEADOWFIELD
Pewter



POPPY MEADOWFIELD
Jade



POPPY MEADOWFIELD
Pewter Blue



POPPY MEADOWFIELD
Lichen



POPPY MEADOWFIELD
Lapis



POPPY MEADOW
Fennel



POPPY MEADOW
Lichen



LUSTRE LINEN
Lichen



LUSTRE LINEN
Slipper



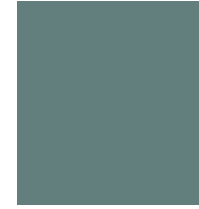
LUSTRE LINEN
Ointment



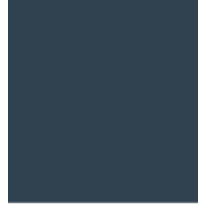
LUSTRE LINEN
Jade



LUSTRE LINEN
Salvia



LUSTRE LINEN
Pewter Blue



LUSTRE LINEN
Ink



LUSTRE LINEN
Lacquer



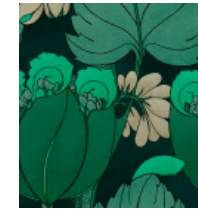
LUSTRE LINEN
Tabacco



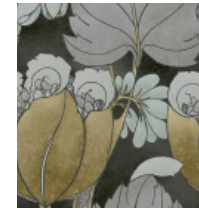
LUSTRE LINEN
Fennel



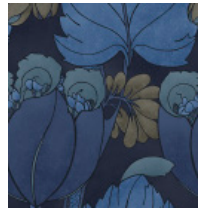
REGENCY TULIP
Jade



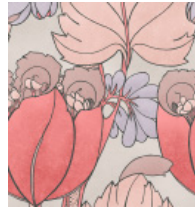
REGENCY TULIP
Pewter Dark



REGENCY TULIP
Lapis



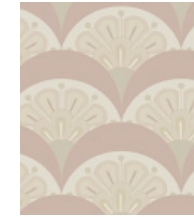
REGENCY TULIP
Lacquer



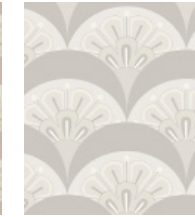
REGENCY TULIP
Pewter



DECO SCALLOP
Lacquer



DECO SCALLOP
Pewter



DECO SCALLOP
Pewter Dark



DECO SCALLOP
Lichen



Fabric: Pattern Library

Quill Weave: Quill is a contemporary decorative stripe design. Originally created in the studio as a fashion fabric, it has been redeveloped into a smart versatile coordinate, reminiscent of feather quills and linked to our iconic Hera Feather. This elegant woven jacquard is richly coloured in six colourways, its lustrous linen and matte cotton capturing the fine detail and tone work within the design.

Quill: A contemporary printed coordinate on Landsdowne 100% Linen. The fine hand painted tone work has been captured on this beautiful versatile fabric.

Hera Plume: A true heritage icon, Hera has adorned Liberty designs ever since the mid-1890s, appearing woven and printed on furnishing fabrics, fashion fabrics and scarves. Hera Plume is a multidirectional one-colour version of Hera, inspired by and adapted from Liberty's jacquard design for silk pyjamas. It is woven using bespoke dyed linen and viscose, creating a soft effect with fine detail and rich colour effects.

Ottoman Spot: A cut-pile velvet design using an artwork drawn from the Liberty archive from the 19th century. Rendered in five colourways, this design provides fresh contemporary appeal and contrast to the intricate floral designs in the collection.

Palampore Trail: Taken from an antique Tree of Life design within the Liberty archive, Palampore Trail has historically appeared as a best-selling scarf design. Here it is reworked into a simpler and cleaner layout, enhancing the striking floral motifs. Printed on a beautiful pure 100% linen in five colourways, the design's richly contemporary hues are reminiscent of the exquisite plant and insect dyes which originally inspired its creation.

Persian Voyage: A much loved Liberty classic, Persian Voyage is inspired by a collection of mid-19th century hand-painted shawl designs from the Liberty archive. This striking version appears repainted and reworked on a high-impact larger scale, printed in five lush colourways on our new contemporary fabric bases of Amersham and Landsdowne Linen.

QUILL WEAVE
Pewter



QUILL WEAVE
Lichen



QUILL WEAVE
Ointment



QUILL WEAVE
Lapis



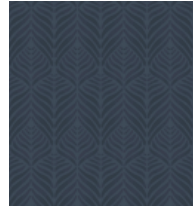
QUILL WEAVE
Salvia



QUILL WEAVE
Jade



QUILL
Lapis



QUILL
Pewter



QUILL
Jade



HERA PLUME
Pewter Blue



HERA PLUME
Ink



HERA PLUME
Salvia



HERA PLUME
Scarab



HERA PLUME
Pewter



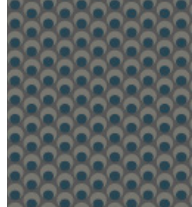
HERA PLUME
Slipper



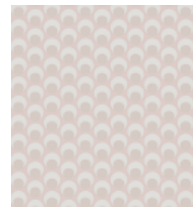
HERA PLUME
Fennel



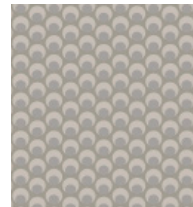
OTTOMAN SPOT
Lapis



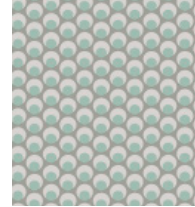
OTTOMAN SPOT
Ointment



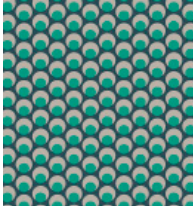
OTTOMAN SPOT
Pewter



OTTOMAN SPOT
Lichen



OTTOMAN SPOT
Jade



PALAMPORE TRAIL
Jade Ointment



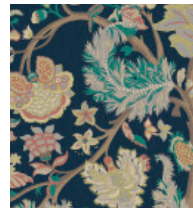
PALAMPORE TRAIL
Lichen



PALAMPORE TRAIL
Pewter



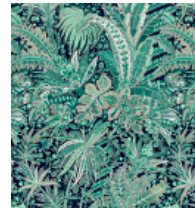
PALAMPORE TRAIL
Pewter Blue



PALAMPORE TRAIL
Lacquer



PERSIAN VOYAGE
Jade



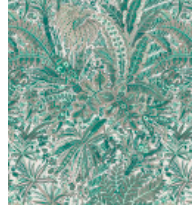
PERSIAN VOYAGE
Lapis



PERSIAN VOYAGE
Lichen

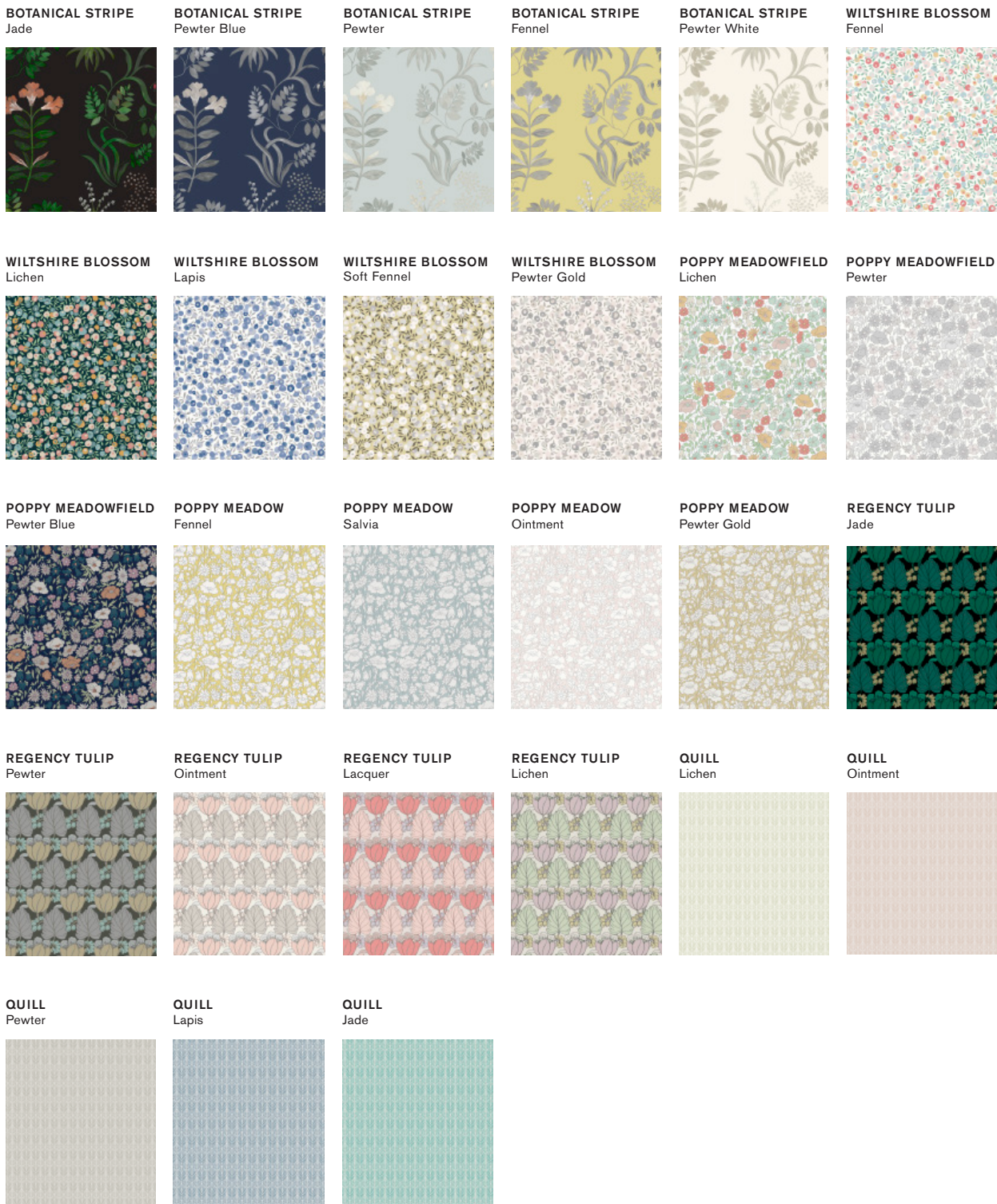


PERSIAN VOYAGE
Jade Stone



PERSIAN VOYAGE
Pewter





Wallpaper: Pattern Library

Botanical Stripe Hand-painted in the Liberty design studio, Botanical Stripe is a signature artwork of the Floribunda collection, celebrating the historic tradition of botanical illustration in Britain. Botanical Stripe is printed using a fine mesh gravure technique, bringing to life the soft painterly nature of the motifs. Matte and metallic pigments are layered in varied degrees of tonality to create a subtle luminescence, reminiscent of Victorian cyanotypes.

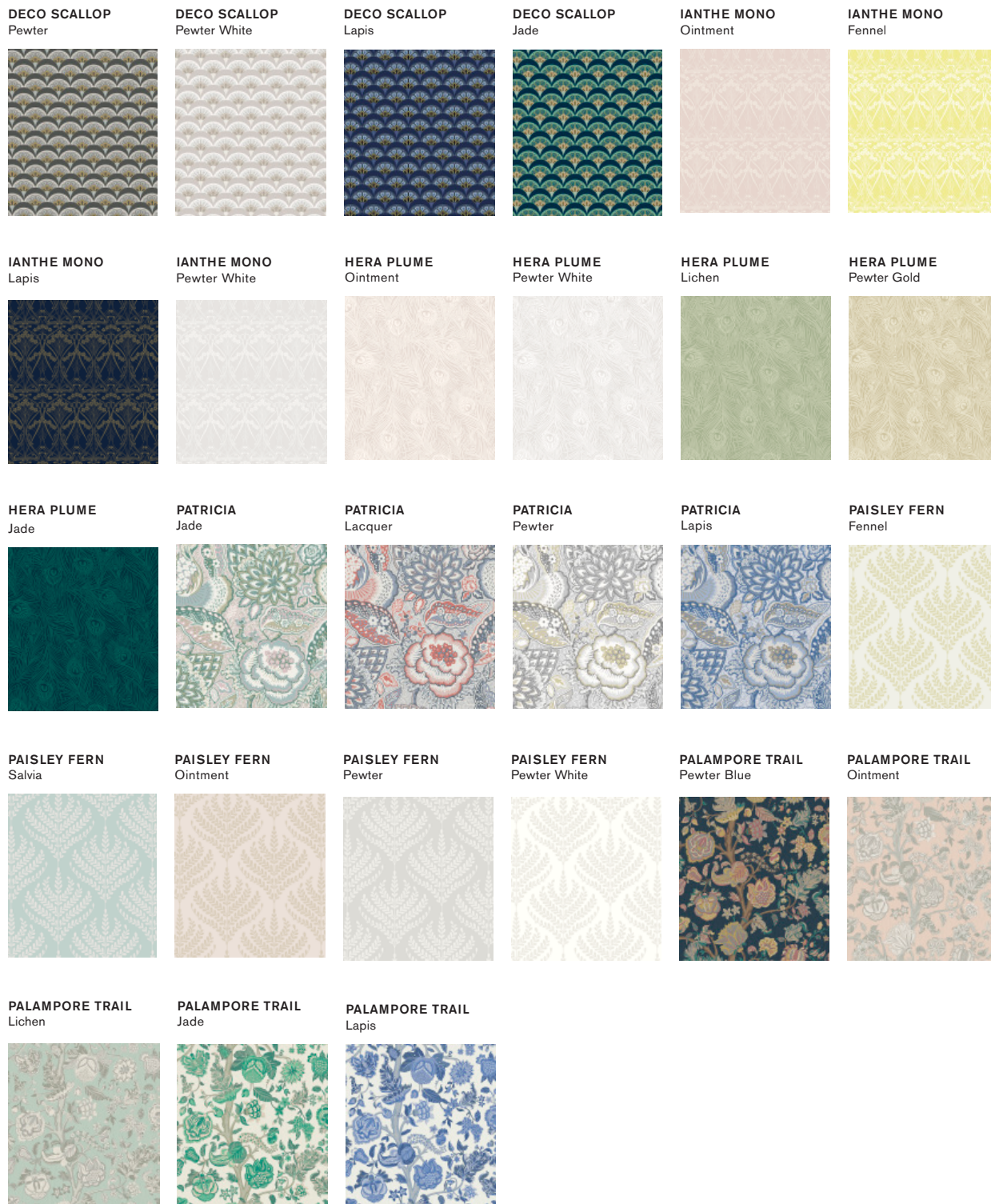
Wiltshire Blossom The iconic 1930s leaf-and-berry Liberty print is repainted and re-engineered into a contemporary furnishing design. It is printed using a hybrid technique which allows both flat colour and raised reticulated pigment to sit side by side, providing a beautiful tactility and clarity of print mark, rendered in both matte and metallic pigment.

Poppy Meadowfield A reworking of a much-loved archival print from 1910. Redrawn and rebalanced as a contemporary wallpaper design, the fine outlines and plains of solid colour mark this as an instantly-recognisable Liberty floral. Design details are captured using a rotary printing technique, softly emulating the screen-printed look of the original. Different opacities of ink are layered to create richly coloured and textured effects in matte and lusted hues.

Poppy Meadow One colour version of the above. Developed as a contemporary all-over floral wallpaper design using soft contemporary coloured grounds.

Regency Tulip Reminiscent of the Gentleman's Clubs of the Regency period, Regency Tulip is reimagined through bold tonal colour combinations into a striking, sartorial design. Rich chalky grounds form the background for the boldly coloured tulip motifs, in beautiful matte and metallic pigments. Carefully selected to bring this design to life, the surface print technique allows rich reticulation of surface pigment, emulating traditional block printing effects.

Quill A contemporary decorative stripe design. Originally created by the Liberty design team as a fashion fabric, it has been developed as a smart versatile coordinate, reminiscent of feather quills and linked to our iconic Hera Feather design. It is printed using a fine engraved roller for a soft elegant look, capturing the fine detail and tone work within the design.



Wallpaper: Pattern Library

Hera Plume A true heritage icon, Hera has adorned Liberty designs ever since the mid-1890s, appearing woven and printed on furnishing fabrics, fashion fabrics and scarves. Hera Plume is a multidirectional one colour version of Hera, adapted from Liberty's jacquard design for silk pyjamas. It is printed using finely engraved rollers, creating a soft effect with fine detail and rich colour effects.

Patricia A richly stylised and exquisitely detailed floral, created in the 1990s and inspired by the Indian chintz patterns that first arrived in Europe at the end of the seventeenth century. Patricia appears reimagined as a wallpaper design, using a surface print technique. Its natural matte colour is inspired by plant dyes, sitting alongside soft metallic pigment to provide subtle matte and shine.

Paisley Fern Created by the Liberty design studio, motifs were taken from the fern-like fronds within our Patricia artwork, to create a simple and elegant coordinating design which provides space and light within the collection. It is printed using a mix of matte and mica pigments to provide soft lustre and depth – rendered in ointment pink and soft gold, pewter grey and down, pale jade and soft fennel yellow.

Palampore Trail Taken from an antique Tree of Life design within the Liberty archive, Palampore Trail has historically appeared as a best-selling scarf design. Here it is reworked into a simpler and cleaner layout, enhancing the striking floral motifs. Printed on a beautiful iridescent non-woven ground, the design shines with subtle mineral-like lustre and richness – reminiscent of the exquisite plant and insect dyes which originally inspired the design.

Deco Scallop Deco Scallop is inspired by Liberty's archive catalogues of the late 1890s to 1910s – where beautiful Japanese Art Deco fans and wallpapers were imported alongside fabrics, jewellery, porcelain, screens, and rugs from the Far East. The motif was developed by the Liberty design studio as a simple contemporary wallpaper design – a modern take on the Liberty peacock feather and Art Deco fan.

Ianthé Mono Ianthé is a quintessential example of French Art Nouveau design, originally created as a wallpaper border by R. Beauclair in c.1902 and printed for Liberty in 1967. Ianthé Bloom Stencil is a one-colour version of Ianthé – discovered hidden in the archive, it evokes the form first used by Liberty in the 1960s. The textured non-woven ground is softly visible through the chalky pigments layered on top.



Fabric Usage & Descriptions

Wellington Velvet: A high-percentage cotton velvet containing a small amount of modal fibre for softness and drape. This velvet provides luxury for residential interiors, plus a high abrasion suitable for contract use. A perfect base for rich saturated tones and bright colours, it also has an elegant drape, making it ideal for heavier curtains where blackout or draft-excluding qualities may be required.

Landsdowne Linen: A beautiful light 100% dual-purpose linen. The weight provides a superior drape and is also suitable for domestic upholstery. The fine weave allows perfect interpretation of the Liberty print collection.

Amersham Linen: A heavyweight linen/cotton blend with beautiful bold texture and hand feel. Used as a base for our most richly coloured and highly patterned designs, Amersham has a stunning contemporary look and feel. This fabric has a soft and natural appearance that makes it perfect for both luxurious residential and general contract use.

Becless Cotton: A beautiful 100% cotton sateen with exceptional drape and soft sheen. The tight flat weave enables absolute clarity of the fine and filigree Liberty print, while showing true and clear colour. Suitable for windows where maximum light and fresh bright drapery is required, this cotton is also a luxurious option for light domestic upholstery.

Lustre Linen : Richly coloured and lightly calendared to produce an exquisite surface sheen, this dual-purpose fabric is available in 10 new colours. Perfect for light domestic upholstery and drapery.

Emberton Linen: A heavyweight high-performance luxurious plain linen. The finishing process provides a superior hand feel and an elegant drape. A small percentage of nylon fibre provides excellent structural stability, high performance abrasion, plus protection against wear and tear. This fabric has a soft and natural appearance that makes it perfect for both luxurious residential and general contract use, as it can be FR treated to contract standards.

Quill Weave (Yarn Jacquard): A beautiful yarn-dyed jacquard weave available in six colours, with matte and lustrous contrast effects created with linen and cotton mixed fibres. Suitable for light domestic luxurious upholstery and drapery.

Hera Plume (Dyed Jacquard): A beautiful piece-dyed jacquard weave available in seven colours, with matte and lustrous contrast effects created with linen and cotton mixed fibres. Suitable for light domestic luxurious upholstery and drapery.

Ottoman Spot (Cut-Pile Velvet): Ottoman Spot is a beautiful mixed-fibre cut-pile velvet. Luxurious in feel and vibrant in colour, it is suitable for heavy domestic and severe contract with additional FR treatment.

Deco Scallop (Multi Jacquard): A beautiful yarn-dyed jacquard weave available in four colours. Suitable for light domestic luxurious upholstery and drapery.

Wallpaper Usage & Descriptions

The Modern Collector Wallpapers are printed on premium non-woven substrates. Often referred to as 'paste-the-wall-products', they are valued for their dimensional stability, both in dry handling and ease of hanging. Non-wovens have a soft tactility, combined with the beauty of richly-defined colour.

Please Note: Colour variations sometimes occur from batch to batch. Please check batch letters before hanging. All widths and repeats are approximate. Liberty designs are unique and protected by copyright internationally. All wallpapers are to fire reg B-s1, do. Printed in the UK.

With Thanks To:

THE RUG COMPANY

JENNIFER MANNERS RUGS

TROVE

Avalon Chest of Drawers.
Stevie Chaise; Poppy Meadowfield in Jade,
Lustre Linen in Jade, Emberton Linen in Acacia.

BETHAN GRAY

Shell Armchair; Palampore Trail in Ointment.
Shell Sofa; Quill Weave in Jade.

OCHRE

Wisp Table Blackcurrant.
Sungaya Table Lamp Putty Leather.

ERCOL

Loveseat in Pale Oak.

MARIANNA KENNEDY

Spring Resin Lamp Yellow.

GUBI

G10 Floor Lamp.

Please Note: Please note our fabrics are made from high quality natural materials. The natural qualities of linen mean that there may be slubs and slight variations in weave. This may affect the penetration of dye in some places. This is not a defect of the fabric – moreover it shows quality and integrity of the natural yarn and printing process. This can be seen on larger pieces and on showroom drapes. Please ask for assistance if you require clarification prior to purchase. In addition, there may be some shade variation from batch to batch. Please order a current stock cutting if you require an exact colour match. Technical specifications are shown on the reverse of each sample.

Copyright: The copyright and any other intellectual property rights in the designs on this fabric belong to Liberty Fabric Ltd. The designs may not be copied, adapted or translated into any other media without the prior written permission of Liberty. Liberty takes very seriously the protection of its intellectual property and will take immediate legal steps to defend its rights in the event of any unauthorised use of its designs

Testing: All fabrics have been tested in accordance to the standards shown on the reverse of each fabric. Technical data sheets and sight of testing certificates can be supplied upon request. Where FR treatment is indicated an additional cost may apply. Liberty can supply details of fabricators. Please check with your upholsterer and furniture manufacturers prior to ordering as their processes may differ and it is their responsibility to confirm which FR code is required.

Flammability: Domestic Upholstery: Unless indicated, you will need to use an inter-liner or apply an additional FR treatment, depending on your upholsterer to comply with UK Match test. All of our upholstery fabrics pass UK cigarette test. Please ask your upholsterer or furniture manufacturer to confirm if they are able to use an inter-liner. If they cannot, please request information from Liberty Sales Staff for FR treatment available for match test certification, prior to ordering your fabric.

Contract Upholstery: Please refer to the technical sheet for each individual fabric. Liberty have tested all of our fabrics in accordance with UK flammability codes. Where fabrics do not inherently pass a code, details are provided of FR treatments available and all fabrics have been pre tested to ensure full compliance once treated. Please ask a member of staff to assist with details of FR treatment required.

Care and Cleaning: We recommend that all velvets and upholstery fabrics are regularly brushed or vacuumed with an upholstery fitting, both to prolong the life of the fabric and to maintain its appearance. Light spot cleaning can be carefully carried out, but we recommend spot testing in a less visible area. Professional dry cleaning as necessary.

