

A detailed botanical illustration on a dark blue, textured background. The scene features several light-colored, gnarled branches with various types of green leaves. Some leaves are simple and oval-shaped, while others are pinnate. There are several clusters of flowers: a large, light pink flower with a yellow center on the right; a cluster of small, white, bell-shaped flowers hanging from a branch; a cluster of small, white, star-shaped flowers; and a cluster of small, yellow flowers. The overall style is reminiscent of 19th-century botanical illustrations.

LIBERTY.

FABRICS

BOTANICAL ATLAS
WALLPAPER COLLECTION



BOTANICAL ATLAS

WALLPAPER COLLECTION

Celebrating the wonder of the natural world, Botanical Atlas showcases an eclectic array of flora and fauna, crafted with timeless elegance and hued in rich, sophisticated colour palettes. This season takes us on a global voyage and an exploration of magical and fantastical forms. Following Sir Arthur Liberty's passion for discovery, the collection references his remarkable expeditions to Japan, China, Persia and India during the 1880s-1910s. From trailing Chinoiserie motifs, through to miniature Persian Garden illustrations, Indian Moghul painting and art from the Japanese Edo period, this intrinsically Liberty collection reinterprets traditional techniques with modern accents.

The cross-pollination of styles creates fascinating visual narratives. Rare specimens, sculptural leaves, magnificent flowers, and imaginary forests are juxtaposed with tranquil stripes and mesmerising geometrics.

Meticulously hand-painted in the Liberty Design Studio, in the heart of London, and expertly printed, using traditional and cutting-edge techniques in England and Italy. The wallpapers include delicately textured metallics to lustrous grass-cloths full of luxurious textures and depth of colour.



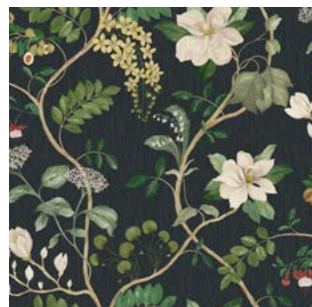
MAGICAL PLANTS

Hand-painted in the Liberty Design Studio, Magical Plants takes us on a fantastical journey of botanical discovery. Inspired by the historic tradition of studied illustration, exquisite natural forms come together to create a majestic trailing garden. Magnolias, Fuchsia, Wisteria, Lily of the valley, White Dogwood, and Nutmeg adorn the graceful leafy branches which skillfully combine scientific accuracy with artistic sensibility. Printed on a super wide-width textured ground with subtle lustre and sheen.





MAGICAL PLANTS
JADE
07292201I



MAGICAL PLANTS
LICHEN
07292201Y

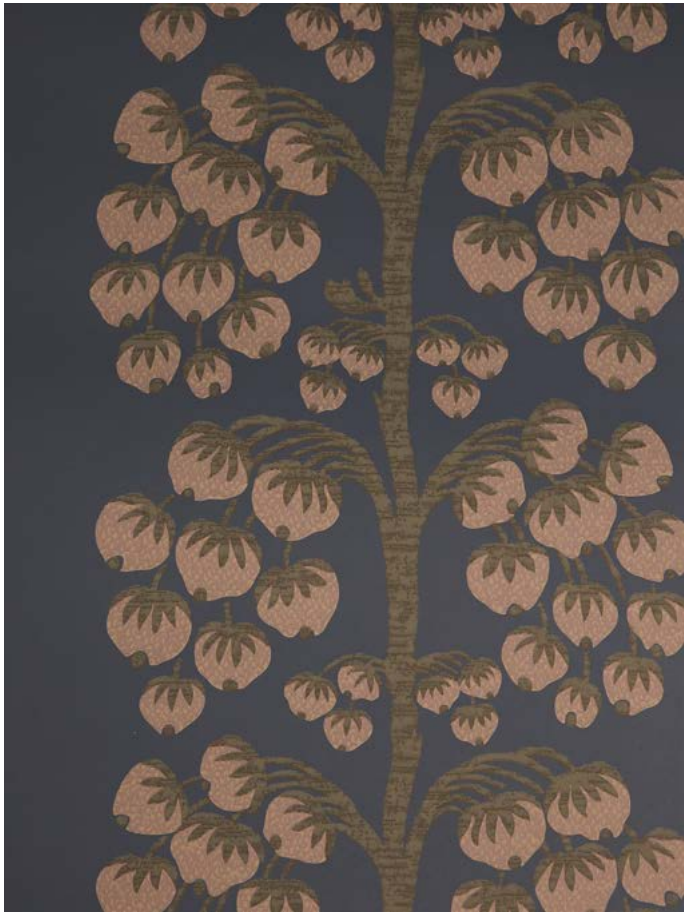


MAGICAL PLANTS
SMALT BLUE
07292201P



WALLPAPER WIDTH: 140 CM / 55.1"
VERTICAL REPEATS: 140 CM / 55.1"
HORIZONTAL REPEATS: 140 CM / 55.1"
SELLING FORMAT: SOLD BY THE METRE, RANDOM CUT





BERRY TREE

Originally created as a woven textile piece, Berry Tree was reimagined as a fresh and contemporary printed wallpaper. Stylised berries are suspended from elegant branches in delicate linear formations, offering a sanctuary of subtle serenity. Whilst the illustrative motifs incorporate a refreshingly modern aesthetic, this trail is printed using specialist print techniques which allows rich reticulation of surface pigment, emulating traditional block printing effects.





BERRY TREE
INK
07282201D



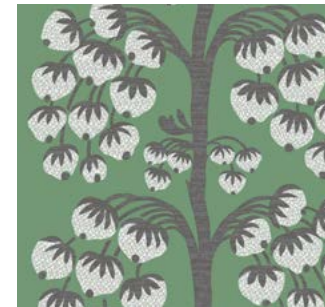
BERRY TREE
LAPIS
07282201C



BERRY TREE
PEWTER
07282201T



BERRY TREE
JADE
07282201I



WALLPAPER WIDTH: 52 CM / 20.5"
VERTICAL REPEATS: 45.72 CM / 18"
HORIZONTAL REPEATS: 52 CM / 20.5"
SELLING FORMAT: 10M ROLL





ENCHANTED WOOD

A panoramic voyage across an imagined landscape, this captivating design was inspired by the book 'Around the World in 80 Trees' by Jonathan Drori. Hand-painted in the Liberty Design Studio in a painting style inspired by miniature Indian garden paintings, Enchanted Wood has stylised trees from all over the world including Maple, Cypress, Willow, Orange, and Pear. Weaving through these lush woodlands are meandering streams, delicate grass and even an imagined Liberty floral tree.



ENCHANTED WOOD
PEWTER
07272203T



ENCHANTED WOOD
JADE
07272203I



WALLPAPER WIDTH: 140 CM / 55.1"
VERTICAL REPEATS: 110 CM / 43.3"
HORIZONTAL REPEATS: 140 CM / 55.1"
SELLING FORMAT: SOLD BY THE METRE, RANDOM CUT



CYPRESS VOYAGE

Inspired by a collection of mid-19th century hand painted shawls from the Liberty archive, Cypress Voyage offers a striking rendition of the much-loved Persian Voyage design – with the original design rescaled and reworked into a brand-new layout. A truly spectacular botanical paisley of tropical palms, feathery fronds, and graceful ferns . Printed on a lustrous grass-cloth base which provides luxurious tactility and richness of colour.





CYPRESS VOYAGE
FENNEL
07192201G



CYPRESS VOYAGE
PEWTER
07192201T



CYPRESS VOYAGE
LAPIS
07192201C



CYPRESS VOYAGE
LICHEN
07192201H



WALLPAPER WIDTH: 87 CM /34.2"
VERTICAL REPEATS: 161.5 CM / 63.6"
HORIZONTAL REPEATS: 87 CM /34.2"
SELLING FORMAT: THIS WALLCOVERING IS SOLD AS A 646CM (254.3") LENGTH ROLL. PRINTED ON GRASSCLOTH, IT IS MADE UP OF TWO DROPS, EACH MEASURING 323CM (127.2") IN LENGTH BY 87CM (34.2") WIDE. THESE NEED TO BE CUT FROM THE ROLL BEFORE HANGING. BOTH DROPS MATCH SIDE TO SIDE FOR EASE OF HANGING. FOR BEST RESULTS WE RECOMMEND THE USE OF A PROFESSIONAL DECORATOR.



OBI STRIPE

Timeless and versatile, this classic stripe design was inspired by a traditional Japanese Obi sash from an antique kimono, and textural grosgrain ribbons. Constructed in compact, narrow widths and tonal colour gradations, Obi Stripe creates a subtle ombre effect. Artistically rendered with soft, hand-painted edges, this rhythmic pattern is an interiors staple – perfect as a coordinate or a feature wall.





OBI STRIPE
FENNEL
07272202G



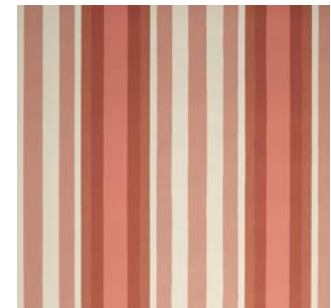
OBI STRIPE
LAPIS
07272202C



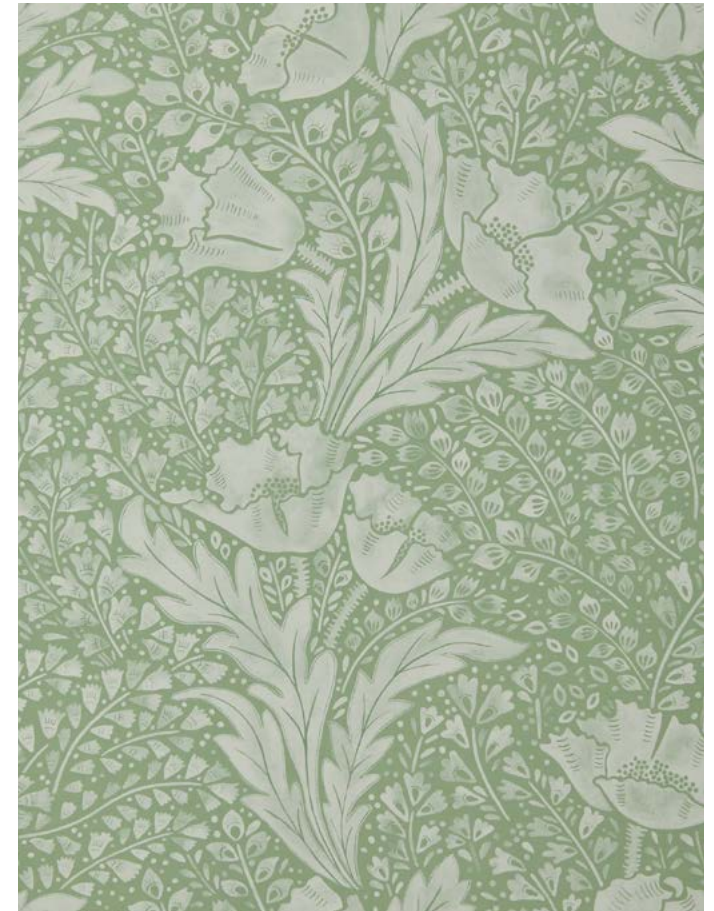
OBI STRIPE
JADE
07272202I



OBI STRIPE
LACQUER
07272202V



WALLPAPER WIDTH: 68.5 CM / 27"
VERTICAL REPEATS: N.A.
HORIZONTAL REPEATS: 68.5 CM / 27"
SELLING FORMAT: 10M ROLL



TUDOR POPPY

This luxurious and poised botanical was inspired by a tiny fragment of fabric discovered in the Liberty archive dating from 1895. Bold stylised Poppies appear to flow in undulating synergy, within a setting of winding foliage and tiny flowering buds. Paying homage to Liberty's long-standing association with the Arts & Crafts movement, Tudor Poppy was lovingly restored and carefully reconstructed with delicate shading and soft inky washes.



TUDOR POPPY
FERN
07222201Y

TUDOR POPPY
LAPIS
07222201C

TUDOR POPPY
INK
07222201D



WALLPAPER WIDTH: 68.5 CM / 27"
VERTICAL REPEATS: 64.1 CM / 25.2"
HORIZONTAL REPEATS: 68.5 CM / 27"
SELLING FORMAT: 10M ROLL





HANA

Originally designed during the height of Liberty's Iconic Art Nouveau period in the early 1900s, Hana is an enticing botanical brimming with ephemeral opulence. Sleek, sweeping Poppies and Carnations are decorated with distinctive sinuous stems, underpinned by a complex network of waves and scattered blossom flowers. Part of Liberty's Art Nouveau revival during the late 1960s, this beautifully elaborate pattern has been reinvented once more, layered in mellow neutral hues.





HANA
LAPIS
07182201C



HANA
OINTMENT
07182201L



HANA
LICHEN
07182201I



WALLPAPER WIDTH: 100 CM / 39.4"
VERTICAL REPEATS: 72.25 CM / 28.5"
HORIZONTAL REPEATS: 100 CM / 39.4"
SELLING FORMAT: 10M ROLL





FLOATING PALACE

This magnificent landscape was originally printed as a Liberty furnishing fabric during the 1970s. Incorporating new stylistic elements, and recoloured in tonal and harmonious palettes, the design is inspired by traditional Chinoiserie wallpaper panels from the 17th & 18th centuries. Repainted and adapted by the Liberty Design Studio, intriguing islands unfold filled with lush gardens, oversized Lotus flowers, fantastic pavilions, floating sampans, and birds in flight. Printed on a textural fibrous metallic base, providing richness and depth reminiscent of antique lacquerware and delicate glass.

'Eva' chair, with thanks to Bonacina 1889, made in Italy.





FLOATING PALACE
TWILL GREY
07302201Z



FLOATING PALACE
PEWTER
07302201T



WALLPAPER WIDTH: 100CM / 39.4"
VERTICAL REPEATS: 91.4CM / 36"
HORIZONTAL REPEATS: 100CM / 39.4"
SELLING FORMAT: SOLD BY THE METRE, RANDOM CUT





FLOATING PALACE LINEN

This magnificent landscape was originally printed as a Liberty furnishing fabric during the 1970s. Incorporating new stylistic elements, and recoloured in tonal and harmonious palettes, the design is inspired by traditional Chinoiserie wallpaper panels from the 17th & 18th centuries. Repainted and adapted by the Liberty Design studio, intriguing islands unfold filled with lush gardens, oversized Lotus flowers, fantastic pavilions, floating sampans, and birds in flight. Printed on a paper backed linen providing a fresh, contemporary ground with tonal jade tones layered on top.



FLOATING PALACE LINEN
JADE
072022011



WALLPAPER WIDTH: 85 CM / 33.4"
VERTICAL REPEATS: 77.5 CM / 30.5"
HORIZONTAL REPEATS: 85 CM / 33.4"
SELLING FORMAT: SOLD BY THE METRE,
RANDOM CUT





ENDLESS KNOTS

Inspired by Japanese indigo printed textiles, Mizuhiki knots and ancient kimono linings, this wonderfully kinetic pattern was adapted from a hand painted design created in the Liberty Studio. Beautifully illustrated with dynamic geometry and delicate precision, its overlapping circles display an endless optical illusion of mesmerising movement. Conventionally printed using surface print techniques the pattern is brought to life with the subtle movement of pigment.





ENDLESS KNOTS
OINTMENT
07272201L



ENDLESS KNOTS
ARTICHOKE
07272201Y



ENDLESS KNOTS
HERON
07272201J



WALLPAPER WIDTH: 52CM / 20.5"
VERTICAL REPEATS: 64.1CM / 25.2"
HORIZONTAL REPEATS: 52CM / 20.5"
SELLING FORMAT: 10M ROLL



PORCELAIN TRAIL

Bathed in soft light to accentuate the nuanced tones and textures, Porcelain Trail is a Chinese style, ornate floral. Based on a hand-painted furnishing design originally printed for Liberty during the late 1960s, this edited version has been exquisitely redrawn, resized and recoloured. Its winding branches are dotted with Blossom flowers and spectacular Chrysanthemums, combining directional design, artistry, and innovation.





PORCELAIN TRAIL
JADE
07312201I



PORCELAIN TRAIL
LAPIS
07312201C



PORCELAIN TRAIL
LACQUER
07312201V



PORCELAIN TRAIL
INK
07312201D



WALLPAPER WIDTH: 68.5CM / 27"
VERTICAL REPEATS: 62.42 CM / 24.6"
HORIZONTAL REPEATS: 68.5 CM / 27"
SELLING FORMAT: 10M ROLL





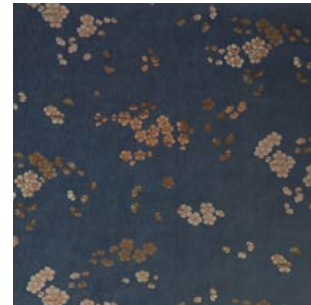
SAKURA

A celebration of the beautiful and transient Cherry Blossom, Sakura embraces the minimalist aesthetic of this Japanese flower. Scattered clusters of simplified buds and blooms appear to float through a windswept sky, referencing the many variations of Blossom patterns found in the Liberty archive. Hand painted in delicate watercolour, these serene flowers appear to be bathed in diffused light. A super-wide delicately textured wallpaper with subtle sheen reminiscent of pressed paper.

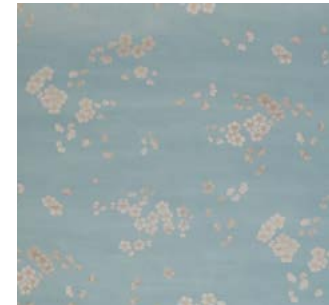




SAKURA
INK
07292201D



SAKURA
SALVIA
07292201F



WALLPAPER WIDTH: 140 CM / 55.1"
VERTICAL REPEATS: 92 CM / 36.2"
HORIZONTAL REPEATS: 140 CM / 55.1"
SELLING FORMAT: SOLD BY THE METRE, RANDOM CUT



SILK TREE

This striking pattern is a refreshingly modern Chinoiserie design. Commissioned artwork created by artists and experts in traditional Chinese silk painting techniques, using metallic silk paper, was reworked into a scenic panel by the Liberty Design Studio. Silk Tree features a joyous canopy of tree and Bamboo branches, decorated with birds, butterflies, Persian Silk Tree flowers, Chinese Physalis, Amaryllis, and Peonies.

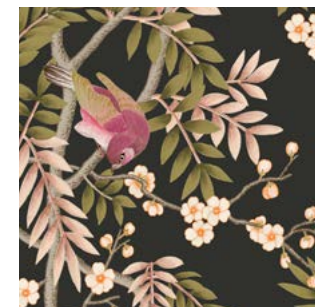




SILK TREE
FLAX FLOWER
07292202S

SILK TREE
LICHEN
07292202H

SILK TREE
RED LAC
07292202E



WALLPAPER WIDTH: 68.5 CM / 27"

VERTICAL REPEATS: 330CM / 129.9"

HORIZONTAL REPEATS: 205.5 CM / 80.9"

SELLING FORMAT: THIS DESIGN IS MADE UP OF THREE 330CM (129.9") DROPS OF WALLPAPER, PRINTED AS ONE CONTINUOUS ROLL MEASURING 68.5CM (27") WIDTH. THE INDIVIDUAL DROPS ARE INDICATED BY A CUT LINE. DIGITALLY PRINTED ON A STRONG, FLEXIBLE NON-WOVEN BASE, THE WALL CAN BE PASTED RATHER THAN THE SUBSTRATE ITSELF. THE DESIGN CAN BE TRIMMED IN HEIGHT IF REQUIRED, REMOVING EXCESS FROM THE SKY OF EACH LENGTH.

FOR BEST RESULTS WE RECOMMEND THE USE OF A PROFESSIONAL DECORATOR.





MAGICAL PLANTS
JADE
07292201I



MAGICAL PLANTS
LICHEN
07292201Y



MAGICAL PLANTS
SMALT BLUE
07292201P



BERRY TREE
INK
07282201D



BERRY TREE
LAPIS
07282201C



BERRY TREE
PEWTER
07282201T



BERRY TREE
JADE
07282201I



ENCHANTED WOOD
PEWTER
07272203T



ENCHANTED WOOD
JADE
07272203I



CYPRESS VOYAGE
FENNEL
07192201G



CYPRESS VOYAGE
PEWTER
07192201T



CYPRESS VOYAGE
LAPIS
07192201C



CYPRESS VOYAGE
LICHEN
07192201H



OBI STRIPE
FENNEL
07272202G



OBI STRIPE
LAPIS
07272202C



OBI STRIPE
JADE
07272202I



OBI STRIPE
LACQUER
07272202V



TUDOR POPPY
FERN
07222201Y



TUDOR POPPY
LAPIS
07222201C



TUDOR POPPY
INK
07222201D



HANA
LAPIS
07182201C



HANA
OINTMENT
07182201L



HANA
LICHEN
07182201I



FLOATING PALACE
LINEN
JADE
07202201I



FLOATING PALACE
Twill GREY
07302201Z



FLOATING PALACE
PEWTER
07302201T



ENDLESS KNOTS
OINTMENT
07272201L



ENDLESS KNOTS
ARTICHOKE
07272201Y



ENDLESS KNOTS
HERON
07272201J



PORCELAIN TRAIL
JADE
07312201I



PORCELAIN TRAIL
LAPIS
07312201C



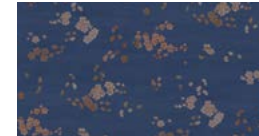
PORCELAIN TRAIL
LACQUER
07312201V



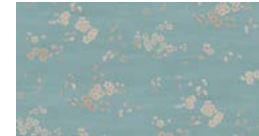
PORCELAIN TRAIL
INK
07312201D



SAKURA
INK
07292201D



SAKURA
SALVIA
07292201F



SILK TREE
FLAX FLOWER
07292202S



SILK TREE
LICHEN
07292202H



SILK TREE
RED LAC
07292202E





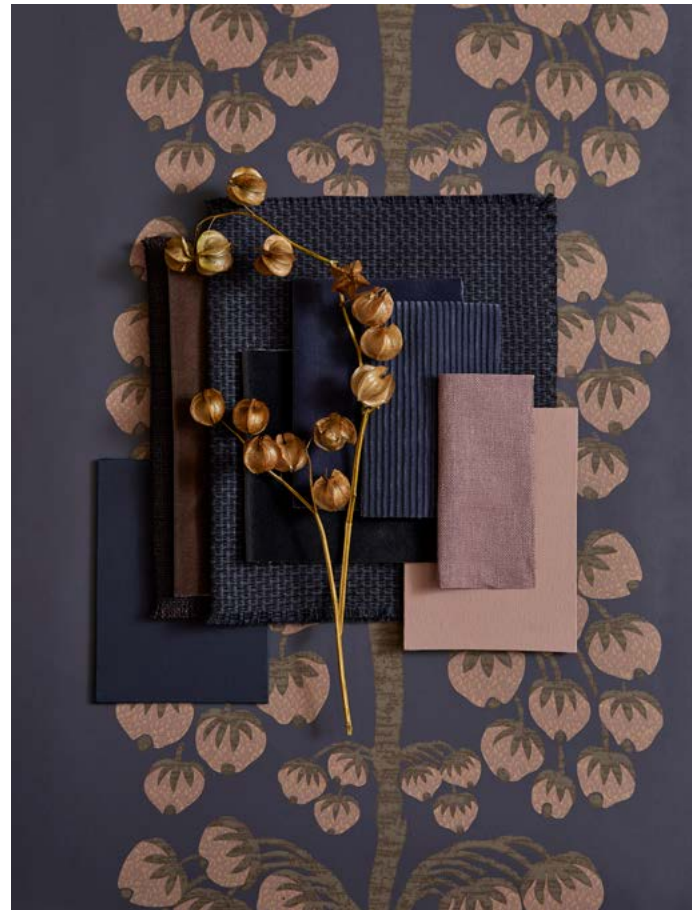
MAGICAL PLANTS
 JADE
 072922011



FABRICS FROM LEFT TO RIGHT:
 COTTON VELVET - AMARANTH
 HELIGAN - RED LAC
 COTTON VELVET - FENNEL
 CHESLYN- NETTLE
 DUNCOMBE - KELP
 MACDONALD - AMARANTH
 MACDONALD - KELP
 COTTON VELVET - MOSS



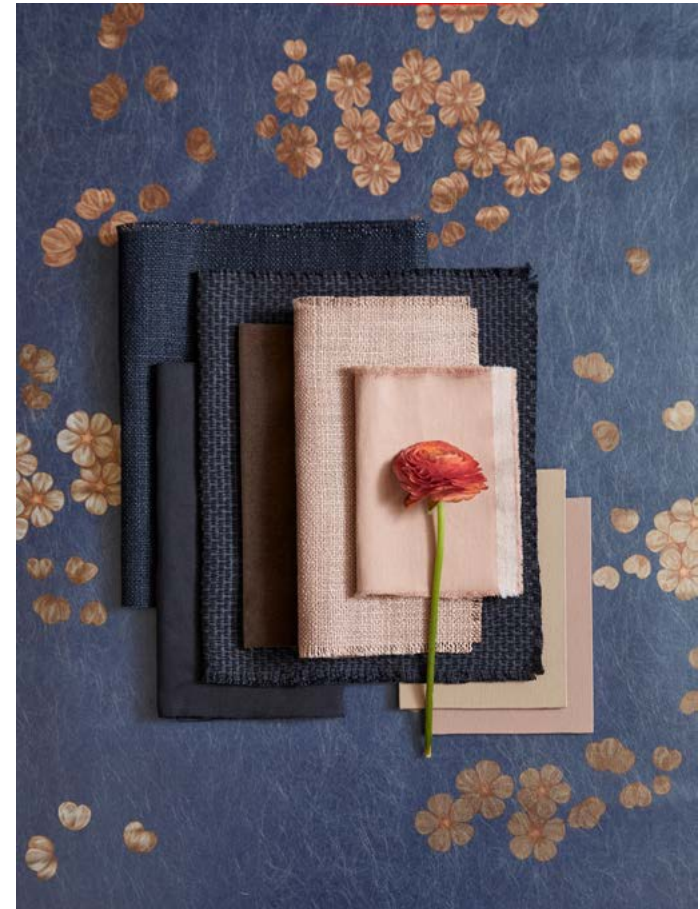
BERRY TREE
INK
07282201D



FABRICS FROM LEFT TO RIGHT:
HELIGAN - BRINDJAL
COTTON VELVET - CURLEW
SHERBORNE - INK
COTTON VELVET - QUARTZ
COTTON VELVET - INK
ISOLA - INK
DUNCOMBE - SLOE



SAKURA
INK
07292201D



FABRICS FROM LEFT TO RIGHT:
HELIGAN - INK
WAKEHURST - INK
SHERBORNE - INK
COTTON VELVET - CURLEW
HELIGAN - SLIPPER
WAKEHURST - SLIPPER



OBI STRIPE
 FENNEL
 07272202G



FABRICS FROM LEFT TO RIGHT:
 WILTSHIRE BLOSSOM - FENNEL
 DUNCOMBE - BUNTING
 BENMORE - ARTICHOKE
 BENMORE - YARROW
 DUNCOMBE - RED LAC
 DUNCOMBE - GALAH PINK
 DUNCOMBE - ORPIMENT



FLOATING PALACE
LINEN
JADE
072022011



FABRICS FROM LEFT TO RIGHT:
HELIGAN - SCARAB
COTTON VELVET - QUARTZ
HELIGAN - TWILL GREY
COTTON VELVET - FLAX
DUNCOMBE - PURSLANE
DUNCOMBE - TOURMALINE
ISOLA - FERN



PAGE 3

WALLPAPER
Magical Plants in Jade,
Botanical Atlas collection
- Liberty Fabrics
PAINT
Paint & Paper Library
CEILING & CORNICE
Paint & Paper Library
VASE
Astier De Villatte at Liberty

PAGE 5

WALLPAPER
Magical Plants in Jade,
Botanical Atlas collection
- Liberty Fabrics
PAINT
Paint & Paper Library
SOFA
George Smith,
upholstered with
Cotton Velvet in Moss,
Art Colours collection
- Liberty Fabrics
OTTOMAN
George Smith
upholstered with Cotton Velvet in
Scarab,
Art Colours collection
- Liberty Fabrics
RUG
Emily's House
VASE
Astier De Villatte at Liberty
ACCESSORIES
Maison Arterfact

PAGE 6

WALLPAPER
Berry Tree in Ink,
Botanical Atlas collection
- Liberty Fabrics
PAINT
Farrow & Ball
CHAIR
Edward Collinson
upholstered with
Sherborne in Ink,
Art Colours collection
- Liberty Fabrics
TABLE
Edward Collinson
ON TABLE
Enrico Donadello

PAGE 8

WALLPAPER
Berry Tree in Ink,
Botanical Atlas collection
- Liberty Fabrics
PAINT
Farrow & Ball
CHAIRS
Edward Collinson
upholstered with
Sherborne in Ink,
Art Colours collection
- Liberty Fabrics
TABLE
Edward Collinson
PENDANT LIGHT
Hadeland Glassverk
ON TABLE
Enrico Donadello
ACCESSORIES
8 Holland Street
ON MANTEL
Maison Arterfact
CUPS
Nicola Gillis
RUG
Crucial Trading

PAGE 9

WALLPAPER
Enchanted Wood in Pewter,
Botanical Atlas collection
- Liberty Fabrics
PAINT
Farrow & Ball
HEADBOARD
Trove upholstered with
Heligan Linen in Tern,
Art Colours collection
- Liberty Fabrics
CUSHIONS all from
Art Colours collection
- Liberty Fabrics
LONG BOLSTER
Duncombe in Tern
TASSEL
Duncombe in Down
BUTTONED CUSHION
Duncombe in Ointment
BEDDING
The Secret Linen Store
THROW
The Tartan Blanket Co at Liberty
SIDE TABLE
Trove
LAMP
HAY at Liberty
VASE
Anna + Nina at Liberty
GOBLET
Astier De Villatte at Liberty
BOOKS
Cambridge Print Company

PAGE 11

WALLPAPER
Cypress Voyage in Fennel,
Botanical Atlas collection
- Liberty Fabrics
PAINT
Farrow & Ball
DAYBED
8 Holland Street.
MATTRESS
Honesty
CUSHIONS all from
Art Colours collection
- Liberty Fabrics
(L TO R Front)
Duncombe in Orpiment
Duncombe in Kelp
Sherborne in Flax
(L TO R Rear)
Duncombe in Orpiment
Duncombe in Kelp
Benmore in Yarrow

PAGE 13

WALLPAPER
Obi Stripe in Fennel,
Botanical Atlas collection
- Liberty Fabrics
PAINT
Farrow & Ball
CANOPY
Duncombe Linen in Robin's Egg,
Art Colours collection
Wiltshire Blossom
Landsdowne Linen in Lichen,
The Modern Collector collection
- Liberty Fabrics
BEDSPREAD
Duncombe in Robin's Egg,
Art Colours Collection
- Liberty Fabrics
Wiltshire Blossom Landsdowne
Linen in Lichen,
The Modern Collector collection
- Liberty Fabrics
CUSHIONS all from
Art Colours collection
- Liberty Fabrics
BOLSTER CUSHIONS
Duncombe Linen in Galah Pink
LARGE CUSHIONS AT BACK
Duncombe Linen
in Red Lac
CENTRE CUSHION
Duncombe Linen in Galah Pink
LEFT HAND CUSHION
Duncombe Linen in Ointment
RIGHT HAND CUSHION
Benmore Linen in Artichoke
DRAWERS
Trove
RUG
Jennifer Manners
LAMP
HAY at Liberty
BOOKS
Liberty
ARTWORK
Rebecca Howarth at Liberty

PAGE 15

WALLPAPER
Tudor Poppy in Fern,
Botanical Atlas collection
- Liberty Fabrics
PAINT
Farrow & Ball
BLIND
Duncombe in Down,
Art Colours Collection
- Liberty Fabrics
CHAIR
David Seyfried Ltd
upholstered with
Duncombe in Purslane
with piping in Duncombe
in Tourmaline,
Art Colours collection
- Liberty Fabrics
PAGE 17
WALLPAPER
Tudor Poppy in Fern,
Botanical Atlas collection
- Liberty Fabrics
PAINT
Farrow & Ball
BLIND
Duncombe in Down
Art Colours collection
- Liberty Fabrics
CHAIR
David Seyfried Ltd upholstered with
Duncombe in Purslane with piping
in Duncombe in Tourmaline
Art Colours collection
- Liberty Fabrics
CUSHION
Duncombe in
in Down,
Art Colours collection
- Liberty Fabrics
BATH
Painted with Farrow & Ball

PAGE 18

WALLPAPER
Hana in Lapis,
Botanical Atlas collection
- Liberty Fabrics
PAINT
Farrow & Ball
LAMP BASE
HOWE London
LAMP SHADE
Pooky
PLANT POT
Stories of Italy Murano at Liberty
PAGE 21
WALLPAPER
Hana in Lapis,
Botanical Atlas collection
- Liberty Fabrics
PAINT
Farrow & Ball
LAMP BASE
HOWE London
LAMP SHADE
Pooky
PLANT POT
Stories of Italy at Liberty
CHAIR
John Sankey
upholstered with
Heligan in Flax Flower,
Art Colours collection
- Liberty Fabrics
CUSHION
Isola in Flax,
Art Colours collection
- Liberty Fabrics
CURTAINS
Duncombe in Bunting
with border in Duncombe
in Small Blue,
Art Colours collection
- Liberty Fabrics
RUG
The Rug Company
SCARF
Kensington Park at Liberty



PAGE 21
WALLPAPER
Floating Palace in Twill Grey,
Botanical Atlas collection
- Liberty Fabrics
PAINT
Paint & Paper Library
CHAIRS
BONACINA upholstered with
Heligan Linen in Slipper,
Art Colours collection
- Liberty Fabrics
SIDE TABLE
Moschino
VASE
Flow Gallery

PAGE 23
WALLPAPER
Floating Palace in Twill Grey,
Botanical Atlas collection
- Liberty Fabrics
PAINT
Paint & Paper Library
CHAIRS
BONACINA upholstered with
Heligan Linen in Slipper,
Art Colours collection
- Liberty Fabrics
SIDE TABLE
Moschino
VASE
Flow Gallery
CURTAIN FRONT
Wakehurst in Kelp
CURTAIN PLEAT DETAIL
Wakehurst in Kelp
CURTAIN LINING
Duncombe Linen in Kelp,
Art Colours collection
- Liberty Fabrics
RUG
Crucial Trading

PAGE 24
WALLPAPER
Floating Palace Linen in Jade
Botanical Atlas collection
- Liberty Fabrics
PAINT
Farrow & Ball
CHAIR
Luccio Carver Chairs
upholstered with
Heligan in Blue Jay,
Art Colours collection
- Liberty Fabrics
VASE
Astier De Villatte at Liberty

PAGE 26
WALLPAPER
Floating Palace Linen in Jade
Botanical Atlas collection
- Liberty Fabrics
PAINT
Farrow & Ball
CHAIRS
Luccio Carver Chairs
upholstered with
Heligan in Blue Jay
Art Colours collection
- Liberty Fabrics
VASE
Astier De Villatte at Liberty
RUG
The Rug Company
WALL LIGHTS
Porta Romana

PAGE 27
WALLPAPER
Endless Knots in Ointment
Botanical Atlas collection
- Liberty Fabrics
PAINT
Farrow & Ball
CHAIR
Ochre
TABLE
Fred Rigby
LAMP
Pooky
VASES
Flow Gallery

PAGE 29
WALLPAPER
Porcelain Trail in Jade
Botanical Atlas
- Liberty Fabrics
PAINT
Farrow & Ball
SOFA
Group Chaise SCP
upholstered with
Cotton Velvet in Fennel,
Art Colours collection
- Liberty Fabrics
CUSHIONS
(FRONT TO REAR)
Duncombe in Kelp
Duncombe in Orpiment,
Art Colours collection
- Liberty Fabrics

PAGE 31
WALLPAPER
Porcelain Trail in Jade
Botanical Atlas collection
- Liberty Fabrics
PAINT
Farrow & Ball
SOFA
Group Chaise SCP
upholstered with
Cotton Velvet in Fennel
Art Colours collection
- Liberty Fabrics
CUSHIONS
(FRONT TO REAR)
Duncombe in Kelp
Duncombe in Orpiment,
Art Colours collection
- Liberty Fabrics
WOODEN TABLE
L.Ercolani
LACQUER TABLE
Grey Susie Atkinson at Liberty
RUG
The Rug Company
VASES
Astier De Villatte
Maison Balzac at Liberty
GLASS ACCESSORIES
Curio at Liberty

PAGE 32
WALLPAPER
Sakura in Ink,
Botanical Atlas collection
- Liberty Fabrics
PAINT
Farrow & Ball
MIRROR
Oka
WALL LIGHTS
Vaughan
SHADES
Pooky
SINK
The Water Monopoly
TABLE
Vaughan
SOAP
Fragonard Magnolia at Liberty

PAGE 34
WALLPAPER
Silk Tree in Flax Flower,
Botanical Atlas collection
- Liberty Fabrics
PAINT
Paint & Paper Library
CHAIR
Ochre
CUSHION ON CHAIR
Duncombe in Purslane,
Art Colours collection
- Liberty Fabrics
WALL LIGHTS
Porta Romana
RUG
The Rug Company

PAGE 36
WALLPAPER
Silk Tree in Flax Flower,
Botanical Atlas collection
- Liberty Fabrics
PAINT
Paint & Paper Library
TABLE
Fiona McDonald
BENCH
Ochre
CUSHION ON BENCH
Duncombe Linen in Small Blue,
Art Colours collection
- Liberty Fabrics
CHAIR
Ochre
CUSHION ON CHAIR
Duncombe in Purslane,
Art Colours collection
- Liberty Fabrics
ON TABLE
Anna + Nina Candle Holder
at Liberty
WALL LIGHTS
Porta Romana
RUG
The Rug Company

PHOTOGRAPHER
Polly Wreford
STYLIST
Claudia Bryant



Liberty is a movement dedicated to discovery, animated by arts, culture, design and the pursuit of beauty. Liberty is famed for its original curation, directional design, and celebration of craftsmanship. In the spirit of our founder, Arthur Lasenby Liberty, we remain unapologetically eccentric and committed to bringing good design to all.

Liberty Fabrics has been at the cutting-edge of design and decorative arts since 1875 and now forms an international artistic movement. Designed by an in-house team in the heart of London, the wallpaper collection was printed in England and Italy using both innovative digital technology and age-old techniques.

Botanical Atlas Wallpapers are printed on premium, non-woven substrates. Often referred to as 'paste-wall-products', these are valued for their dimensional stability both in dry handling and hanging. Non-wovens have a soft hand feel to them, with the beauty of richly defined colour. Please note: Colour variations sometimes occur from batch to batch. Please check batch letters before hanging. All widths and repeats are approximate. Liberty designs are unique and protected by copyright internationally. Printed in the UK and Italy.

All wallpapers meet fire regulations: B-S1, D0 and D-S3, D2.

INTERIORS@LIBERTYLONDON.COM
LIBERTYFABRIC.COM/BOTANICALATLAS